

Editors-in-Chief / Rédacteurs en chef  
RT Joffe, MD  
SN Young, PhD

Editor Emeritus / Rédacteur émérite  
YD Lapierre, MD

Editors / Rédacteurs  
GB Baker, PhD  
P Blier, MD, PhD  
LT Young, MD, PhD

Editor (Statistics) / Rédacteur (statistiques)  
L Annable, DipStat

Editorial Advisory Board  
Conseil de rédaction  
P Boksa, PhD, Canada  
M Bourin, MD, France  
GD Burrows, MD, Australia  
CL Cazzullo, MD, Italy  
S Chattarji, PhD, India  
HC Fibiger, PhD, USA  
S Garattini, MD, Italy  
A Gjerris, MD, DSci, Denmark  
KA Hawkins, PsyD, USA  
RW Horton, MD, United Kingdom  
S Kanba, MD, PhD, Japan  
J Mendlewicz, MD, Belgium  
SA Montgomery, MD, United Kingdom  
B Müller-Oerlinghausen, MD, Germany  
I Nalepa, PhD, DSc, Poland  
SC Newman, MD, Canada  
M Pollack, MD, USA  
R Quirion, PhD, Canada  
GJ Sarwer-Foner, MD, USA  
P Seeman, MD, PhD, Canada  
DJ Stein, MD, South Africa  
KG Todd, PhD, Canada  
VK Yeragani, MD, India

Submit your manuscript at  
Soumettre votre manuscrit à  
<http://mc.manuscriptcentral.com/jpn>

Direct inquiries to / Renseignements  
Kristen Hines  
[kristen.hines@cma.ca](mailto:kristen.hines@cma.ca) or  
[jpn@cma.ca](mailto:jpn@cma.ca)  
tel 800 663-7336, x2398  
fax 613 565-5471

© 2007 Canadian Medical Association /  
Association médicale canadienne

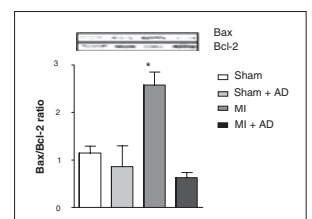
ISSN 1180-4882

## Editorial / Éditorial

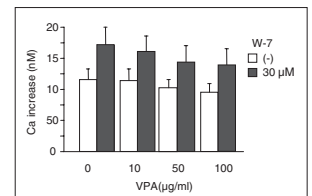
- 8 Of rats and schizophrenia  
*P. Boksa*

## Research Papers / Articles de recherche

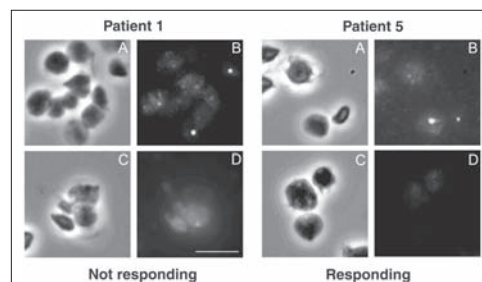
- 11 Vulnerability for apoptosis in the limbic system after myocardial infarction in rats: a possible model for human postinfarct major depression  
*B.P. Wann, T.M. Bah, M. Boucher, J. Courtemanche, N. Le Marec, G. Rousseau, R. Godbout*



- 17 Effects of valproate on serotonin-induced intracellular calcium mobilization in human platelets  
*T. Akimoto, I. Kusumi, K. Suzuki, T. Masui, T. Koyama*



- 23 Platelet serotonin levels support depression scores for women with postpartum depression  
*E. Maurer-Spurej, C. Pittendreigh, S. Misri*



Official Journal of the Canadian College of Neuropsychopharmacology  
Revue officielle du Collège canadien de neuropsychopharmacologie  
January / janvier 2007 www.cma.ca/jpn Vol. 32, No. 1

**Managing Editor**  
Directrice de la rédaction  
Eryn Kirkwood  
eryn.kirkwood@cma.ca  
tel 800-663-7336 x2460  
fax 613 565-5471

**Editorial Coordinator**  
Coordonnatrice de la rédaction  
Melanie Slavitch  
melanie.slavitch@cma.ca  
tel 800 663-7336 x2398  
fax 613 565-5471

**Translation / Traduction**  
Marie Saumure

**Production**  
Kathryn A. Freamo  
Nicole Barbeau, Carole Lalonde, Clara Walker

**Online Publishing / Publication en direct**  
Garth Pyper  
Shirley Waddell

**Advertising / Publicité**  
613 731-8610 x2127/2314; fax 613 565-7488;  
advertising@cma.ca

**Classified Advertising**  
Annonces classées  
Beverly Kirkpatrick, Deborah Rodd

**Display Advertising / Annonces publicitaires**  
Deborah Woodman

**Marketing and Advertising Sales**  
Marketing et publicité  
Keith Communications Inc.  
Toronto: tel 905 278-6700 or  
toll free/sans frais 800 661-5004  
fax 905 278-4850  
Montréal: tel 514 624-6979 or  
toll free/sans frais 877 761-0447  
fax 514 624-6707  
info@keithhealthcare.com



All prescription drug advertisements have been cleared by the Pharmaceutical Advertising Advisory Board.

Toutes les annonces de médicaments prescrits ont été approuvées par le Conseil consultatif de publicité pharmaceutique.

## Review Papers / Examens critiques

- 30 Cannabis and cognitive dysfunction: Parallels with endophenotypes of schizophrenia?  
*N. Solowij, P.T. Michie*

## 53 Instructions for Authors

## 56 Directives aux auteurs

## Psychopharmacology for the Clinician Psychopharmacologie pratique

- 72 Management of conventional antipsychotic-induced tardive dyskinesia  
*H.C. Margoese, F. Ferreri*

Online manuscript  
submission and  
peer review

NOW AVAILABLE FOR JPN at  
<http://mc.manuscriptcentral.com/jpn>

