

Editors-in-Chief / Rédacteurs en chef
RT Joffe, MD
SN Young, PhD

Editor Emeritus / Rédacteur émérite
YD Lapierre, MD

Editors / Rédacteurs
GB Baker, PhD
P Blier, MD, PhD
LT Young, MD, PhD
P Boksa, PhD

Editor (Statistics) / Rédacteur (statistiques)
L Annable, DipStat

**Editorial Advisory Board
Conseil de rédaction**
M Bourin, MD, France
GD Burrows, MD, Australia
CL Cazzullo, MD, Italy
S Chattarji, PhD, India
HC Fibiger, PhD, USA
S Garattini, MD, Italy
A Gjerris, MD, DSci, Denmark
KA Hawkins, PsyD, USA
RW Horton, MD, United Kingdom
S Kanba, MD, PhD, Japan
J Mendlewicz, MD, Belgium
SA Montgomery, MD, United Kingdom
B Müller-Oerlinghausen, MD, Germany
I Nalepa, PhD, DSc, Poland
SC Newman, MD, Canada
M Pollack, MD, USA
R Quirion, PhD, Canada
GJ Sarwer-Foner, MD, USA
P Seeman, MD, PhD, Canada
DJ Stein, MD, South Africa
KG Todd, PhD, Canada
VK Yeragani, MD, India

**Submit your manuscript at
Soumettre votre manuscrit à**
<http://mc.manuscriptcentral.com/jpn>

© 2007 Canadian Medical Association
Association médicale canadienne

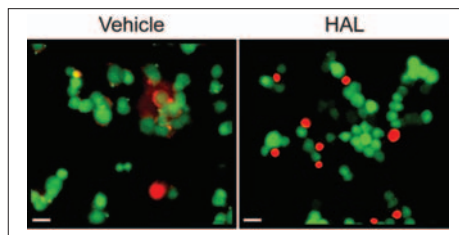
ISSN 1180-4882

Editorial / Éditorial

- 313** Amine oxidases and their inhibitors: what can they tell us about neuroprotection and the development of drugs for neuropsychiatric disorders?
G.B. Baker, B. Sowa, K.G. Todd

Research Papers/ Articles de recherche

- 316** Dysfunction in early auditory processing in major depressive disorder revealed by combined MEG and EEG
S. Kähkönen, H. Yamashita, H. Ryttsälä, K. Suominen, J. Ahveninen, E. Isometsä
- 323** Haloperidol induces the nuclear translocation of phosphatidylinositol 3'-kinase to disrupt Akt phosphorylation in PC12 cells
Y. Dai, Z. Wei, C.F. Sephton, D. Zhang, D.H. Anderson, D.D. Mousseau
- 331** Changes in serum lipids, independent of weight, are associated with changes in symptoms during long-term clozapine treatment
R.M. Procyshyn, K.M. Wasan, A.E. Thornton, A.M. Barr, E.Y.H. Chen, E. Pomarol-Clotet, E. Stip, R. Williams, G.W. MacEwan, C. L. Birmingham, W.G. Honer, for the Clozapine and Risperidone Enhancement Study Group



Managing Editor
Directrice de la rédaction
Eryn Kirkwood
eryn.kirkwood@cma.ca
tel 800-663-7336 x2460
fax 613 565-5471

Editorial Coordinator
Coordonnatrice de la rédaction
Kristen Hines
kristen.hines@cma.ca
tel 800 663-7336 x2182
fax 613 565-5471

Translation / Traduction
Marie Saumure

Production
Kathryn A. Freamo
Nicole Barbeau, Carole Lalonde, Clara Walker

Online Publishing / Publication en direct
Holly Bodger
Shirley Waddell, James Manship

Advertising / Publicité
613 731-8610 x2127/2314; fax 613 565-7488;
advertising@cma.ca

Classified Advertising
Annonces classées
Beverly Kirkpatrick, Deborah Rodd

Display Advertising / Annonces publicitaires
Deborah Woodman

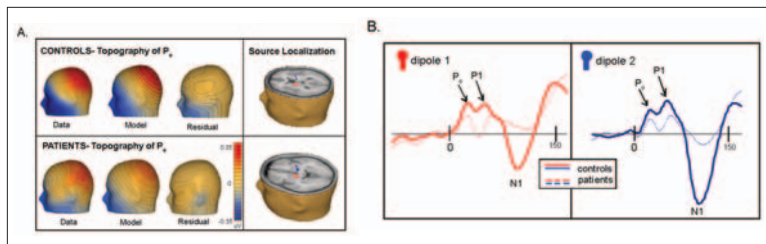
Marketing and Advertising Sales
Marketing et publicité
Keith Communications Inc.
Toronto: tel 905 278-6700 or
toll free/sans frais 800 661-5004
fax 905 278-4850
Montréal: tel 514 624-6979 or
toll free/sans frais 877 761-0447
fax 514 624-6707
info@keithhealthcare.com



All prescription drug advertisements have been cleared by the Pharmaceutical Advertising Advisory Board.

Toutes les annonces de médicaments prescrits ont été approuvées par le Conseil consultatif de publicité pharmaceutique.

- 339** Auditory processing in schizophrenia during the middle latency period (10–50 ms): high-density electrical mapping and source analysis reveal subcortical antecedents to early cortical deficits
V.M. Leavitt, S. Molholm, W. Ritter, M. Shpaner, J.J. Foxe



- 354** The 5HTTLPR polymorphism, prior maltreatment and dramatic-erratic personality manifestations in women with bulimic syndromes
H. Steiger, J. Richardson, R. Jooper, L. Gauvin, M. Israel, K.R. Bruce, N.M.K.N. Ying Kin, H. Howard, S.N. Young

- 363** Fatty acid composition in postmortem brains of people who completed suicide
A. Lalovic, É. Levy, L. Canetti, A. Sequeira, A. Montoudis, G. Turecki

371 Prescribing Pages

Psychopharmacology for the Clinician
Psychopharmacologie pratique

- 384** Pharmacological treatment of poststroke pathological laughing and crying
P. Giacobbe, A. Flint