

# Advances in the understanding of the pathophysiology of schizophrenia and bipolar disorder through induced pluripotent stem cell models

Andrea Perrottelli, PhD; Francesco Flavio Marzocchi, MD; Edoardo Caporusso, MD; Giulia Maria Giordano, MD, PhD; Luigi Giuliani, MD; Antonio Melillo, MD; Pasquale Pezzella, MD; Paola Bucci, MD, PhD; Armida Mucci, MD, PhD; Silvana Galderisi, MD, PhD

The pathophysiology of schizophrenia and bipolar disorder involves a complex interaction between genetic and environmental factors that begins in the early stages of neurodevelopment. Recent advancements in the field of induced pluripotent stem cells (iPSCs) offer a promising tool for understanding the neurobiological alterations involved in these disorders and, potentially, for developing new treatment options. In this review, we summarize the results of iPSC-based research on schizophrenia and bipolar disorder, showing disturbances in neurodevelopmental processes, imbalance in glutamatergic–GABAergic transmission and neuromorphological alterations. The limitations of the reviewed literature are also highlighted, particularly the methodological heterogeneity of the studies, the limited number of studies developing iPSC models of both diseases simultaneously, and the lack of in-depth clinical characterization of the included samples. Further studies are needed to advance knowledge on the common and disease-specific pathophysiological features of schizophrenia and bipolar disorder and to promote the development of new treatment options.

## Introduction

Schizophrenia and bipolar disorder are complex and challenging mental disorders, whose etiopathogenesis can be traced back to a complex interaction between genetic and environmental factors that begins at the early stages of neurodevelopment.<sup>1–4</sup>

Together, these disorders affect about 2%–3% of the population worldwide<sup>5–7</sup> and are associated with severe functional impairment, a remarkable reduction of quality of life, high levels of disability, and premature death.<sup>8–10</sup>

Schizophrenia is a psychotic disorder whose onset is typically in adolescence or early adulthood between the ages of 16 and 30 years.<sup>11</sup> The disorder is characterized by a broad and diverse spectrum of clinical manifestations, including formal thought disorder, delusions, hallucinations, negative symptoms, and deficits in cognitive and social functioning.<sup>12–15</sup> Importantly, although the reduction of symptom severity contributes to functional recovery, patients with remission of psychotic symptoms may still present serious impairment in different areas of real-life functioning, mainly because there

are no effective treatments for major determinants of poor outcomes such as negative symptoms and deficits in cognition.<sup>16–18</sup>

Bipolar disorder is characterized by alternating and fluctuating episodes of depression and mania or hypomania, or mixtures of manic and depressive features.<sup>19,20</sup> The onset of bipolar disorder is between the ages of 20 and 30 years, with patients displaying heterogeneous clinical presentations and response to treatments.<sup>20–23</sup>

Despite distinct diagnostic criteria, schizophrenia and bipolar disorder show some degree of overlap on different aspects, especially in certain subpopulations of patients.<sup>24–29</sup> The first of these aspects pertains to the clinical presentation of these 2 disorders. Specifically, within the spectrum of psychotic disorders, the diagnosis of schizoaffective disorder includes clinical features of schizophrenia and bipolar disorder, and can be subdivided into bipolar and depressive types, the former characterized by the presence of manic episodes.<sup>30</sup> Furthermore, bipolar disorder is commonly divided into 2 subtypes with distinct features, type I and type II. Both types can present psychotic symptoms, but these are generally more frequent among patients with type I bipolar disorder.<sup>31</sup> Finally,

**Correspondence to:** G.M. Giordano, University of Campania “Luigi Vanvitelli”, Largo Madonna delle Grazie 1, 80138 Naples, Italy; giuliamgiordano@gmail.com

Submitted Jan. 8, 2024; Revised Aug. 4, 2023; Revised Nov. 2, 2023; Revised Jan. 8, 2024; Accepted Jan. 8, 2024

**Cite as:** *J Psychiatry Neurosci* 2024 March 15;49(2). doi: 10.1503/jpn.230112

cognitive disturbances, can be frequently recorded in schizophrenia but are also present in more subtle forms in both types of bipolar disorder, with some studies reporting a higher frequency of these deficits in type I bipolar disorder.<sup>27,32–35</sup>

Alterations at the embryonic and later neurodevelopmental stages — leading to defects in neuronal differentiation, connectivity, and neurotransmission — have been traced both in schizophrenia and bipolar disorder, with higher frequencies recorded in schizophrenia.<sup>2,36–38</sup> Nevertheless, aberrant neurodevelopmental trajectories have been consistently recorded in a subset of people with bipolar disorder, particularly those with an early age of illness onset and those exhibiting psychotic symptoms.<sup>2</sup>

Schizophrenia and bipolar disorder seem to share some identified genetic and environmental risk factors that seem to underpin the neurobiology of both disorders.<sup>39–42</sup> For instance, a study involving 2 million families showed a remarkable increase in risk of developing schizophrenia if a close relative was diagnosed with bipolar disorder.<sup>40</sup> Specifically, several common single nucleotide polymorphisms (SNPs) across the genome have been detected for schizophrenia and bipolar disorder,<sup>43</sup> with remarkably high estimates of genetic correlation between these 2 disorders compared with other psychiatric conditions.<sup>43,44</sup> Interestingly, patients with type I bipolar disorder and patients with bipolar disorder with psychotic features present similar genetic risk factors as patients with schizophrenia compared with patients with type II bipolar disorder, who are more genetically correlated with patients with major depressive disorder.<sup>43,45–47</sup> Furthermore, rare genetic variants, such as copy number variations, have been linked more to the manifestation of schizophrenia than bipolar disorder, with loci overlapping with autism spectrum disorders and intellectual disability.<sup>48</sup> Loci of copy number variations have only rarely and inconsistently been associated with bipolar disorder.<sup>49</sup> However, copy number variations have been implicated in the pathogenesis of bipolar disorder in specific cases such as among patients with schizoaffective disorder bipolar type.<sup>50</sup> Overall the different SNPs or copy number variations associated with schizophrenia and bipolar disorder have been found to affect the expression of genes regulating glutamate neurotransmission,<sup>43,51–54</sup> sodium and calcium signalling,<sup>55–57</sup> cytoskeletal components,<sup>58,59</sup> or cortical neurogenesis.<sup>60</sup> Furthermore, genetic background seems to interact with common environmental factors<sup>61–63</sup> that may increase the risk for both disorders,<sup>1,3</sup> such as perinatal risk factors,<sup>64,65</sup> adverse life events (especially during childhood),<sup>66,67</sup> and the misuse of certain substances or drugs.

Structural and functional neuroimaging studies have also identified similarities in the brain correlates of schizophrenia and bipolar disorder, such as smaller total brain and hippocampal volumes, thinner cortical thickness, and larger ventricular volumes.<sup>68–75</sup> However, effect sizes of these alterations were smaller in bipolar disorder than schizophrenia; these disorders also show some disease-specific brain abnormalities such as distinct grey matter reductions in the pregenual cingulate cortex (anterior Brodmann area 4) in bipolar disorder and larger intracranial volume and thicker right parietal cortex in schizophrenia.<sup>69,76–79</sup>

Despite the important advancements deriving from studies involving animal models, genetic sequencing, neuroimaging, and postmortem observations, deciphering the pathophysiology of these disorders represents still a challenge.<sup>26,80–84</sup> Recent progress in the field of stem cell research offers a promising avenue for understanding the neurodevelopmental and molecular alterations involved in these disorders and, potentially, for developing new treatment options.<sup>85</sup> The advent of induced pluripotent stem cells (iPSCs) in 2006 has allowed the creation of *in vitro* models that retain the genetic information of the original donor and can help detect the presence of any aberrations in the molecular cascades present in a wide array of psychiatric disorders.<sup>86</sup> These cells are obtained using a set of transcription factors to induce adult somatic cells to return to an embryonic-like state, regaining pluripotency and the ability to differentiate into various cell types such as neural progenitor cells (NPCs), fully developed neurons, microglia, and astrocytes.<sup>86–90</sup> Three-dimensional (3D) models, organoids, have also been developed, whereby iPSCs growing in matrix substrates are able to recapitulate, quite successfully, the functional and structural development of the adult nervous system.<sup>91–93</sup>

Overall, studies employing iPSCs in schizophrenia and bipolar disorder have adopted 2 main approaches. The first focuses on the genetic risk variants associated with these disorders and how the presence of these allelic variations in iPSC models affect molecular and cellular characteristics. The second focuses on the differences in neurodevelopmental processes, morphological characteristics, and neurotransmission recorded in iPSC-derived cells of patients and healthy donors.

Therefore, the aim of the current review was to provide a comprehensive overview on results obtained with both approaches, highlighting how iPSC studies have advanced understanding of main pathological alterations linked to schizophrenia and bipolar disorder, and the shared or specific mechanisms traced in the 2 disorders. For the current narrative review, we searched PubMed for articles in English published until March 2023 for combinations of schizophrenia, psychotic disorders, or bipolar disorder and stem cells or iPSC. We employed 10 narrative reviews and studies from their bibliographies in the current review to provide a detailed description of the literature addressing this topic.<sup>21,91,94–101</sup> Furthermore, we retrieved and included additional studies and recent publications from the PubMed search. Findings from these studies have been arranged under different sections that describe how the iPSC models have provided further evidence on the pathophysiological mechanisms linked to schizophrenia and bipolar disorder. We discuss the shared and distinct alterations detected in the 2 disorders and the current challenges for iPSC studies.

## Alterations in neurodevelopmental trajectories

The neurodevelopmental hypothesis postulates that disturbances in neurogenesis, occurring both during embryonic development and the postnatal period, can functionally alter neural circuitry and lead to the onset of schizophrenia and bipolar disorder.<sup>36,102</sup> Neurogenesis involves cell proliferation,

differentiation, programmed cell death, and segregation into specific regions, which all contribute to the development of the components of the nervous system.<sup>103</sup> Molecular biology, neuroimaging, and postmortem studies have supported the hypothesis of disturbances in neurogenesis, showing that several genes associated with schizophrenia and bipolar disorder are expressed prenatally and are involved in cell differentiation, leading to alterations in cortical structures during early neurodevelopmental stages or at the onset of the disease.<sup>2,104,105</sup> For instance, some of the genetic risk factors of these 2 disorders are mostly expressed mid-pregnancy,<sup>106</sup> a period when the occurrence of adverse events in the birthing parent's life may cause aberrant development of key brain structures such as the hippocampus, limbic system, and prefrontal cortex (PFC), leading to mental health disorders in adult offspring.<sup>107,108</sup>

One of the molecular pathways that has gained attention in studies using stem cells to explore the neurodevelopmental hypothesis is the Wnt signalling pathway.<sup>60,93,109–113</sup> The Wnt pathway is involved in cellular communication, proliferation, migration, and polarity, as well as in embryonic and adult stem cell homeostasis and fate determination throughout embryogenesis and organogenesis.<sup>114–116</sup> Specifically, during embryogenesis, the Wnt signalling pathway plays an important role in neurogenesis, inhibiting the differentiation of NPCs into oligodendrocytes progenitor cells.<sup>115</sup>

### Schizophrenia models

Different alterations of the Wnt pathway in iPSC from patients with schizophrenia have been reported. Studies have found an association between sequence variations in the *DISC1* (disrupted in schizophrenia) gene and alterations in Wnt signalling. The *DISC1* gene is one of the most studied in schizophrenia research given the frequent associations reported between its allelic variations and the development of schizophrenia.<sup>117–119</sup> Moreover, some studies have also reported an association between genetic variations of *DISC1* and bipolar disorder.<sup>120,121</sup>

As a multifunctional scaffold protein, *DISC1* interacts with several proteins involved in neuronal migration, neurite growth, proliferation of NPCs, and synaptic function.<sup>117,122</sup> The effects of *DISC1* mutations on the Wnt pathway and how these could be linked to defects in neurodevelopmental trajectories can be investigated with iPSC models. For instance, a study investigated abnormalities in Wnt signalling using NPCs engineered with a *DISC1* exon 2/8 interruption gene in iPSCs from healthy donors.<sup>111</sup> The study showed that these NPCs had an increase in Wnt signalling activity, with alterations in the expression of neuronal fate-related genes (i.e., increased expression of dorsal progenitor markers and decreased expression of ventral progenitor markers), possibly driving aberrations in the distribution of cell types generated during cortical development.<sup>111</sup> In line with these results, another study comparing 3D organoid models presenting either a mutation of *DISC1* in exon 8 or wild-type *DISC1*, showed a decrease in NPC proliferation and alterations of ventricular structures, underpinned by an increase in

baseline Wnt signalling, in the *DISC1*-mutated model.<sup>93</sup> In contrast to these results, a decrease in Wnt signalling activity was recently detected in iPSC-derived brain organoids from patients with schizoaffective disorder and schizophrenia.<sup>109</sup> Specifically, this decrease in Wnt signalling led to an increase in differentiation into neurons that produce  $\gamma$ -aminobutyric acid (GABA), with elevated inhibitory synaptic density, a reduced proliferation of NPCs, and faster neuronal maturation.<sup>109</sup> Therefore, discrepancies of findings concerning Wnt levels might be owing to 2 main factors. The first factor concerns the limitations in reproducing the dynamics of the developing brain in organoids models since, in the brain, excitatory and inhibitory neurons are generated in separate brain regions, which can be only partially reproduced in 3D iPSC models.<sup>94</sup> The second factor is related to the fact that the 2 organoid models were derived from 2 different research protocols. In fact, one study focused on the cellular phenotypes in twins discordant for schizophrenia diagnosis to detect disease-specific alterations, while minimizing inter-individual genetic variations.<sup>109</sup> On the other hand, the study by Srikanth and colleagues<sup>93</sup> investigated the consequences of *DISC1* interruption in cells derived from healthy donors to determine which subtle neurodevelopmental disruption might be linked to *DISC1* and predispose to psychiatric disorders.

A study comparing the characteristics of NPCs derived either from iPSCs with *DISC1* mutation or iPSCs with wild-type *DISC1* showed that alterations in neurogenesis in the former might also be owing to defects in microRNA regulation, such as an increase in microRNA-219 levels.<sup>123</sup> MicroRNAs are a class of small, noncoding RNAs that act as post-transcriptional regulators of gene expression. Specifically, microRNA-219 inhibits NPC proliferation and self-renewal by controlling the expression of genes involved in these processes.<sup>123</sup> Therefore, alterations in *DISC1* expression and increases in microRNA-219 could be linked to a reduction in neural stem cell proliferation. Recent studies have also revealed that mutations in *DISC1* may lead to aberrant interactions with other binding proteins.<sup>122,124</sup> One study highlighted the importance of the interaction between *DISC1* and *Ndel1*, which is a component of the dynein complex, implicated in neurogenesis.<sup>125</sup> This process was studied in human brain organoid models of patients with schizophrenia with *DISC1* mutations, showing a reduction in neural stem cell proliferation related to disruption of *DISC1*–*Ndel1* interaction and delayed cell-cycle progression in radial glial cells.<sup>126</sup> Overall, these studies seem to suggest that disruptions in Wnt signalling pathway due to *DISC1* mutations might cause a reduction in proliferation of neuronal cells, leading to the development of schizophrenia. This hypothesis is in line with postmortem and brain imaging evidence that shows reduction of brain volume among patients affected by schizophrenia.<sup>127,128</sup>

Another genetic risk factor that has been strongly linked to schizophrenia and neurodevelopmental abnormalities is the 22q11.2 deletion,<sup>129</sup> with a prevalence of this mutation in 0.5%–1% of patients with schizophrenia.<sup>130,131</sup> This genetic mutation has also been associated with mood disorders (major depressive disorder and bipolar disorder), cognitive impairments, and developmental delays.<sup>132–134</sup> Furthermore,

the 22q11.2 deletion has been associated with microRNA-mediated pathways.<sup>135–137</sup> For instance, iPSC studies focusing on the 22q11.2 deletion showed remarkable alterations in *DCGR8* gene expression, which encodes a protein that mediates the biogenesis of microRNAs, resulting in alterations of neural differentiation efficiency, neurite outgrowth, and cellular migration.<sup>135–137</sup> A further insight on the alterations linked to this mutation was provided by iPSCs generated from 1 patient with schizophrenia with 22q11.2 deletion.<sup>138</sup> In this study, the obtained neurospheres — free-floating clusters of neural stem cells generated from iPSCs — showed reductions in their size upon differentiation in the culture derived from the patient with this genetic deletion, without alteration in their total number.<sup>138</sup> In addition, an enrichment of apoptotic genes was observed in iPSCs from the patient with schizophrenia, which might be linked to increased susceptibility to apoptosis in early neurodevelopmental processes and lead to synaptic or dendritic loss.

Overall, the current results of iPSC models of schizophrenia have shown how alterations traced in levels of Wnt, molecular signalling cascades, and the concentration of microRNAs might lead to defects in different neurodevelopmental processes such as neuronal proliferation, maturation, and migration.

### *Bipolar disorder models*

Similar evidence of altered Wnt pathways has been found in iPSC-derived neurons of patients with bipolar disorder.<sup>139–141</sup> In particular, a study reported an altered expression of several genes related to the Wnt pathway and neurodevelopment such as *PAX6* in iPSCs of patients affected by bipolar disorder, which was associated with an impaired capability to differentiate into a mature neuronal lineage and reduced proliferation of NPCs.<sup>140</sup> Furthermore, this defect in cellular proliferation was rescued by an inhibitor of glycogen synthase 3 (GSK3), which, as shown in animal studies, is an inhibitor of the Wnt pathway.<sup>111,142</sup> Interestingly, the beneficial effects of lithium therapy in bipolar disorder treatment may be mediated by the inhibitory effect of lithium on GSK3.<sup>140,142</sup>

Studies on bipolar disorder have also shown that altered expression of brain-derived neurotrophic factor (*BDNF*) may play a role in the pathogenesis of this condition.<sup>143–147</sup> The *BDNF* protein is a neurotrophic factor that acts on neurons of the central and peripheral nervous systems, which promotes survival of existing neurons and growth and differentiation of new neurons and synapses. Furthermore, *BDNF* has a role both in the early development of the central nervous system and in later regulation of neuronal plasticity in adulthood.<sup>148,149</sup> An iPSC study showed that the level of *BDNF* mRNA in iPSCs derived from 6 patients with bipolar disorder was lower than that derived from healthy donors, which may result in defects in regulatory mechanisms involved in neurodevelopmental and neural plasticity.<sup>150</sup>

Another study analyzed expression of microRNA-34a in iPSCs derived from patients with bipolar disorder.<sup>151</sup> The iPSC-derived neuronal cultures showed an increase in microRNA-34a levels, compared with iPSCs from healthy donors. Higher microRNA-34a concentrations would then

lead to an increase in the inhibition of the expression of *ANK3* and *CACNB3* genes, which have been previously categorized as genetic risk factors for the development of bipolar disorder, leading to changes in neuronal differentiation and synaptic plasticity.<sup>151</sup> An increase in microRNA-34a levels was also recently observed in a study using NPCs from patients with bipolar disorder.<sup>152</sup>

Finally, evidence of defects in neurodevelopmental processes has also emerged in a study with iPSC cells from 3 patients with bipolar disorder, which showed alterations in a molecular cascade that controls spatial segregation of the central nervous system. In fact, neurons of patients with bipolar disorder increased expression of genes of ventral neurons, such as *NKX2-1*, while control-derived neurons increased levels of genes of dorsal neurons. These findings suggest that the presence of defects in the neural patterning and differentiation process in the developing nervous system may increase risk for onset of bipolar disorder.<sup>139</sup> In addition, the genes related to transforming growth factor- $\beta$ , which are implicated in early neuronal differentiation and proliferation, were expressed at lower levels in neurons of patients with bipolar disorder than controls.<sup>139</sup>

Overall, growing evidence indicates the presence of aberrations in several molecular mechanisms in neurodevelopment, rather than 1 mechanism, in iPSC models of bipolar disorder. Some studies reported links to defective Wnt signalling, which can lead to a decrease in the proliferation of NPCs and aberrant patterning in specific regions of the central nervous system, which can be partly rescued by lithium treatment.

### **Defects in neuronal morphology and interneuronal connectivity**

Alterations in structural and functional brain connectivity have largely been reported and discussed in studies investigating the neurobiology of schizophrenia and bipolar disorder.<sup>28,153</sup> Brain imaging and postmortem studies have in fact shown morphological anomalies in brains of patients affected by schizophrenia, such as decreased connectivity between the thalamus and PFC and increased connectivity between the thalamus and sensorimotor cortex,<sup>154–157</sup> alterations that can be detected during premorbid stages of the illness and that persist throughout the life of patients, according to longitudinal studies.<sup>158,159</sup>

Therefore, iPSC studies have examined alterations in the morphological features of neurons derived from patients with schizophrenia and bipolar disorder to characterize structural and connectivity defects.

### *Evidence from iPSC models in schizophrenia*

One defective candidate mechanism is axon morphology and development, including axon guidance, which is defined as the process through which axons reach and identify their targets.<sup>160–162</sup> For instance, neurons derived from iPSCs of patients with schizophrenia showed a decrease in neurite length from a reduction in the expression of adhesion protein-coding genes, such as protocadherin (*PCDH*),

neurexin (*NRXN*), and neural cell adhesion molecule (*NCAM1*) genes.<sup>163–165</sup> These proteins are of primary importance in the regulation of interactions between neurons and in the trafficking of cell components.<sup>166</sup>

Other supporting evidence related to axon guidance defects involve the ephrin–Eph and Slit–Robo signalling cascades, which are known to influence the communication and targeting of axons from neurons of subcortical regions toward the appropriate cortical areas.<sup>109,110,112,113,160,167</sup>

For the ephrin–Eph pathway, studies in mice have shown that high concentrations of ephrin-A5 in the somatosensory cortex play a repellent role against innervation of limbic thalamic fibres.<sup>168</sup> In fact, a decrease in ephrin-A5 causes excessive innervation of thalamic fibres to the sensorimotor cortex.<sup>168</sup> Studies of iPSCs found altered expression of ephrin-A ligands and receptors in cortical neurons and astrocytes derived from patients affected by schizophrenia.<sup>109,169</sup>

The Slit–Robo pathway is composed by Slit, a family of ligand proteins that act as a repulsive cue in axon guidance, and Robo, their transmembrane receptor; their several possible combinations during embryogenesis promote differentiation of the neural tube components.<sup>170</sup> In mice models, mutations in this pathway are associated with alterations in thalamocortical and corticothalamic axonal targeting and corticocortical axonal pathfinding.<sup>171</sup> In neurons derived from iPSCs of patients with schizophrenia, alterations in this pathway have been observed, such as a reduction in Robo2 and an increase in Robo3 and Slit2, which have been hypothesized to cause a decrease in cortical connectivity.<sup>110</sup>

Other alterations detected in iPSCs in schizophrenia that may lead to defective neuronal connectivity were those traced in axonal myelination, a process that is mediated by oligodendrocytes.<sup>172</sup> Two stem cells studies have shown that oligodendrocytes derived from patients with schizophrenia were altered in various aspects such as differentiation, morphological maturation, and viability,<sup>173,174</sup> compared with iPSCs from healthy donors, which could lead to irregular myelination and defective strengthening of axonal pathways.

Different alterations have also been found in dendritic spine morphology and the branching process. For instance, a study involved an iPSC model with the 15q11.2 deletion, another genetic risk factor for schizophrenia.<sup>175</sup> The 15q11.2 deletion leads to *CYFIP1* haploinsufficiency, reducing the levels of cytoplasmic fragile X mental reduction (FMR) 1 interacting protein 1 (CYFIP1), which is implicated in synaptic functions on 2 levels.<sup>176,177</sup> First, CYFIP1 interacts with the FMR protein,<sup>178</sup> which is a regulatory protein present in the neuronal cell body, proximal to dendrites and axons,<sup>179</sup> that associates with polyribosomes to regulate the transcription of different proteins that operate at the synapses.<sup>180–182</sup> The CYFIP1 protein also interacts with the Wiskott–Aldrich syndrome family member 1 and 2 (WAVE 1 and 2) proteins, involved in cytoskeletal remodelling. In an iPSC study, researchers focused on the effect of *CYFIP1* deletion on NPCs from patients with schizophrenia carrying this mutation.<sup>183</sup> These NPCs presented an altered expression of genes involved in cell cycle and cytoskeletal remodelling.<sup>183</sup> Another study showed that neural rosettes generated from iPSCs with 15q11.2 haploinsufficiency

displayed abnormalities in polarity and distribution of the adherens junction, caused by the reductions in CYFIP1 levels and, consequently, by altered interactions with WAVE 1/2.<sup>184</sup> The results from these studies suggest an important role of aberrations in synaptic functioning and cytoskeletal remodelling in the pathophysiology of schizophrenia.

Defects in the formation of synapses have also been indicated as further morphological aberrations traced in components of the central nervous system in psychiatric disorders. Specifically, some iPSC studies have gathered evidence on how alterations in the expression of *NRXN1*, which encodes neurexin-1, and mutations in chromosome 15 may be linked to alterations in synapses morphology. Neurexin-1 is a presynaptic membrane protein that interacts with neuroligins (a type of postsynaptic membrane protein) to form synapses.<sup>185</sup> Haploinsufficiency of *NRXN1* has been categorized as a genetic risk factor for schizophrenia.<sup>186</sup> In line with these results, an iPSC study found that haploinsufficiency of *NRXN1* led to significant dysregulation of cell adhesion and neuronal differentiation, and reduced levels of synaptotagmins, neurexophilins, and vesicular trafficking proteins.<sup>187</sup>

Finally, dysregulation of synaptic remodelling has also been linked to alterations in brain connectivity and to the pathophysiology of mental health disorders. In humans, during the development of the PFC, synaptic density increases until childhood and reaches a peak before 10 years of age, after which it decreases during adolescence until the third decade of life.<sup>188</sup> The decrease in synaptic connections is caused by a process called synaptic pruning, which is mediated by microglial cells.<sup>189</sup> Alterations in synaptic pruning have been linked to schizophrenia. The most common age of illness onset for schizophrenia is in the early 20s to 30s,<sup>190,191</sup> which coincides with the physiologic peak period of synaptic pruning. Postmortem studies have shown decreased density of postsynaptic elements in superficial PFC layers among patients with schizophrenia.<sup>192</sup> These results are in line with an iPSC study that showed impaired synaptic pruning in vitro using neurons and monocytes derived from iPSCs of patients with schizophrenia.<sup>193</sup>

To summarize, the reported evidence in schizophrenia suggests a multifactorial and complex series of morphological defects in neuronal morphology, axon myelination and guidance, and synaptic modelling, which have all been implicated in the pathophysiology of this psychiatric disorder.

#### *Evidence from iPSC models in bipolar disorder*

Previous studies have revealed a series of alterations in iPSC models of bipolar disorder. One study focused on the differences recorded in the characteristics of cellular migration in iPSCs from patients with bipolar disorder.<sup>194</sup> The time-lapse analysis showed that, among patients with bipolar disorder, migrating NPCs had a higher mean speed and abnormal directionality, with an increase in random trajectories, than cells from healthy donors.<sup>194</sup> Furthermore, transcriptome analysis showed that expression of migration-related genes, such as cell surface receptors, were altered in models of bipolar disorder.<sup>194</sup> Defects in cellular migration in neuronal cells have also been linked to defects in neurodevelopmental processes.

Another study, using iPSCs from patients with bipolar disorder, showed further morphological alterations such as a decrease in the size of neurospheres and an increase in the length of their neurites.<sup>152</sup> However, a different study reported a decrease in the length of neurites and in the number of synapses in bipolar disorder-derived cells, compared with control iPSCs.<sup>164</sup>

Two studies investigated abnormalities in bipolar disorder using 3D multicellular culture systems. One showed a decrease in size of the subventricular zone in bipolar disorder organoids, compared with those derived from healthy donors.<sup>152</sup> In the other study, iPSC-derived human cortical spheroids of patients with bipolar disorder showed smaller size of spheroids, reduced proportion of neurons, reduced neural network activity, and decreased neuronal excitability compared with the 3D models obtained from healthy controls.<sup>195</sup>

These findings suggest that neurons induced from patient-derived iPSCs exhibit alterations in synapse- and dendrite-related phenotypes that are consistent with the defects in neural connectivity highlighted in bipolar disorder.

## Dysfunctions in neurotransmitter systems

Dysfunctional neurotransmission has been regarded to play a primary role in the development of psychiatric disorders. One of the most accredited hypotheses underlying the pathophysiology of schizophrenia stems from the aberrations traced in different features of glutamate and GABA neurotransmission. Specifically, according to the glutamate hypothesis, symptoms in schizophrenia may be linked to reduced functioning of *N*-methyl-D-aspartate (NMDA) glutamate receptors and excessive glutamate signalling.<sup>196</sup> This theory is in line with observations of the effects of NMDA receptor antagonists, such as ketamine, which can induce psychosis in healthy people.<sup>197,198</sup> Furthermore, postmortem studies showed lower levels of NMDA receptors in brains of patients with schizophrenia, compared with healthy controls.<sup>196</sup> Since NMDA receptors drive the activity of cortical inhibitory interneurons, a reduction in NMDA receptor function, as recorded in schizophrenia, reduces the rate of GABAergic interneurons, resulting in disinhibition of pyramidal neurons.<sup>199</sup>

In addition, one of the most accepted and explored hypothesis to explain the symptoms observed in schizophrenia is a state of hyperactive dopaminergic signal transduction within the nigrostriatal pathways.<sup>97</sup> Alterations in dopamine transmission have also been linked to the glutamatergic-GABAergic imbalance observed in schizophrenia, since the removal of tonic inhibition of dopaminergic neurons from frontal inhibitory neurons would then lead to excessive striatal dopamine release (Figure 1).<sup>37</sup>

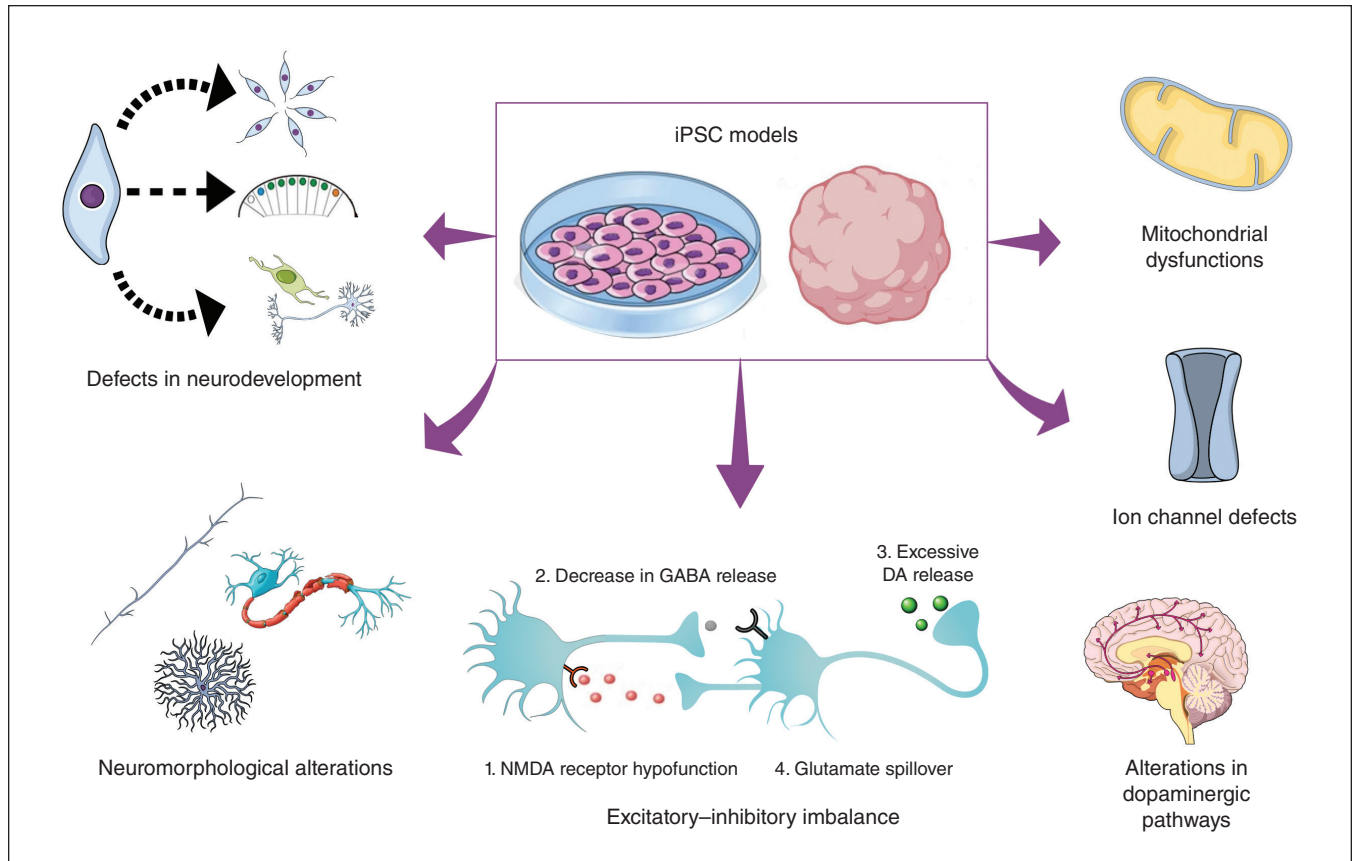
Studies on the neurobiology of bipolar disorder have mainly focused on dysfunctions in monoaminergic neurotransmission in the central nervous system, also supported by the mechanisms of actions of pharmacological treatments and related to the clinical features of depression or mania.<sup>200</sup> For instance, hyperactivity in the dopaminergic system has

been linked to episodes of mania. In addition, alterations in glutamatergic and GABAergic levels have been recorded in bipolar disorder.<sup>200</sup> Specifically, glutamate levels were found to be high in the postmortem brains of patients with bipolar disorder; the concentration of glutamate was decreased after valproate treatment, and GABA levels were increased after lithium treatment.<sup>201,202</sup>

## Dysfunctions in neurotransmitter systems in iPSC models of schizophrenia

Several iPSC studies have confirmed aberrant glutamate signalling in schizophrenia. The main alterations observed were a reduction of the expression of different glutamate receptor subunits (i.e., *GRIN2A*, *GRIN2B*, *GRIK1*, *GRIK2*, *GRM1*, *GRM7*) and glutamate transporter genes in iPSC from patients with schizophrenia.<sup>92,110,165,167,203</sup> Furthermore, a study showed that neurons derived from iPSCs of patients with schizophrenia presented alterations in the activity of the pituitary adenylate cyclase-activating polypeptide, a neuropeptide that acts on vasoactive intestinal peptide-expressing interneurons<sup>204,205</sup> and enhances NMDA receptor activity.<sup>203</sup> Furthermore, forebrain neurons generated from iPSCs derived from patients with both schizophrenia and *DISC1* mutation had lower levels of *DISC1* protein and deficits in synaptic vesicle release and synapsis morphology in glutamatergic neurons.<sup>206</sup> In addition, it was shown that, by removing the *DISC1* mutation through genetic engineering, the functionality of glutamatergic synapses was restored.<sup>206</sup> Finally, iPSC studies have reported reduced density of excitatory postsynaptic elements in cultures of glutamatergic neurons derived from patients with schizophrenia, in accordance with genetic studies that have identified alterations in genes encoding postsynaptic proteins among patients affected by psychosis.<sup>207</sup>

Several studies have also shown defects in GABAergic transmission in iPSC models of schizophrenia. For instance, studies have shown alterations of GABA-synthesizing enzymes and differential expression of GABA receptor subunits in neurons derived from iPSCs of patients with schizophrenia.<sup>92,109,110,203,208</sup> In particular, an iPSC study conducted in a pair of monozygotic twins showed that brain organoids generated from iPSCs of the twin with schizophrenia had more GABAergic neurons than those of the healthy twin.<sup>109</sup> Furthermore, genes related to the GABA receptor were overexpressed in neurons produced from iPSCs of the affected twin.<sup>109</sup> Other studies on iPSCs have highlighted a down-regulation of glutamate decarboxylase (*GAD*) genes in schizophrenia, which are involved in synthesis of GABA.<sup>92,203</sup> This evidence could explain the decreased expression of *GAD* in the dorsolateral PFC of brains of patients affected by schizophrenia found in postmortem studies.<sup>209</sup> Furthermore, a calcium imaging study using neurons derived from iPSCs of patients with schizophrenia showed that neurons from treatment-responsive patients (typical antipsychotic users) had a different response to GABA and glutamate than neurons from treatment-resistant patients (clozapine users); neurons from treatment-responsive patients had a decreased response to GABA and a normal response to glutamate, while



**Figure 1:** Pathophysiological alterations observed in iPSC models of schizophrenia and bipolar disorder. The development of 2- and 3-dimensional iPSC models has allowed the investigation of several, often interconnected, pathophysiological mechanisms that appear to contribute to the clinical presentation of schizophrenia and bipolar disorder. Research using iPSCs has reinforced the idea that these disorders share different neurobiological mechanisms, as shown by the detection of disturbances in neurodevelopmental processes (proliferation, segmentation, and differentiation), neuromorphological alterations (axon development, myelination, and dendrite branching), glutamatergic–GABAergic transmission imbalance (also linked to dysfunctions in dopaminergic pathways), and defects in ion channels and mitochondria, in both disorders. DA = dopamine, iPSC = induced pluripotent stem cell, GABA =  $\gamma$ -aminobutyric acid, NMDA = *N*-methyl-D-aspartate.

those from treatment-resistant patients showed a normal response to GABA and an increased response to glutamate.<sup>210</sup> Finally, other studies have found synaptic deficits associated with reduced expression of adhesion genes, such as *PCDHs* and neuroligin-2 (*NLGN2*), in inhibitory GABAergic neurons generated from iPSCs of patients with schizophrenia.<sup>163,208</sup>

Some studies have also shown defects in dopaminergic transmission in iPSC models of schizophrenia.<sup>161,211</sup> For instance, a study using iPSC-derived dopaminergic neurons reported altered neuronal differentiation and maturation, with a reduced expression of tyrosine hydroxylase and  $\beta$ III-tubulin, as well as a decrease in the density length of neurites and the absence of dopamine transporter expression.<sup>161</sup> These findings are consistent with studies reporting defects in cortical neuronal growth and the functionality of the dopaminergic system, localized in the corticolimbic circuit, among patients with schizophrenia.<sup>97,212,213</sup> Another study found that the maturation processes involving dopaminergic neurons were largely unchanged in cells derived from patients with schizophrenia, compared with healthy donors, but that the levels of

dopamine production and release were higher among patients with schizophrenia,<sup>211</sup> supporting the idea that an overactive dopaminergic system in areas such as the basal ganglia and the ventral mesencephalon may be at the core of this disorder.<sup>214</sup>

Overall, these results suggest that alterations in both glutamate and GABA neurotransmission may contribute to the pathophysiology of schizophrenia. In physiologic conditions, GABA interneurons suppress the excitatory activity from glutamate-expressing pyramidal neurons, resulting in an inhibitory feedback loop. In schizophrenia, inhibitory neurons are thought to receive attenuated input from excitatory neurons and thereby fail to effectively inhibit their target excitatory neurons, leading to neuronal hyperactivity in the corticolimbic system (Figure 1). These dysfunctions in excitatory-inhibitory cortical loops have also been linked to aberrations in electroencephalographic indices such as increased slow-frequency activity and defective synchronization of high-frequency activity.<sup>215–217</sup> Further iPSC studies are required to improve our knowledge on the dysfunctions present in the dopaminergic system.

## Dysfunctions in neurotransmitter systems in iPSC models of bipolar disorder

Few postmortem, imaging, and iPSC studies have highlighted defective glutamatergic transmission in bipolar disorder.<sup>218–220</sup> Specifically, 1 study, using iPSCs from patients with bipolar disorder, highlighted that disruption in circadian rhythm genes could be traced in NPCs and glutamatergic neurons. Furthermore, defects in expression of circadian rhythm genes were particularly evident in neurons of patients who were not responsive to lithium treatment, compared with iPSCs derived from healthy controls.<sup>220</sup> Further iPSC studies focusing on glutamatergic transmission alterations in patients with bipolar disorder are required to improve knowledge on a possible imbalance in this neurotransmission system in this disease.

Regarding GABAergic transmission, an iPSC study compared microarray expression data in 4 siblings affected by bipolar disorder with 4 unaffected siblings at the neural progenitor stage, at 2 weeks (early stage) and at 4 weeks (late stage).<sup>221</sup> Differences in gene expression between controls and affected patients changed during the 2 stages of differentiation. Specifically, there was an upregulation of *GAD1* in neurons at the late stage among patients affected by bipolar disorder, compared with the neurons of healthy controls.<sup>221</sup> Finally, in iPSC-derived NPCs and organoids of a patient with schizoaffective disorder, bipolar type (characterized by the presence of psychosis), an increase in GABAergic synapse-related genes and enhanced GABAergic specification was recorded, compared with the NPCs derived from a healthy twin.<sup>109</sup>

Dysfunctions in the dopaminergic system in iPSC models of bipolar disorder have been only rarely reported. The increase in dopaminergic activity in bipolar disorder has been hypothesized to be linked to the presentation of manic episodes and to the progressive loss of grey matter and synaptic density. For instance, a study showed that, in iPSC models derived from patients with bipolar disorder who did not respond to lithium, D<sub>1</sub> and D<sub>2</sub> dopamine receptor proteins were significantly increased, compared with models derived from healthy donors and lithium responders.<sup>222</sup> Another study revealed that, in neural stem cell lines derived from patients with bipolar disorder, defects in the dopaminergic signalling pathway could be recorded during the early stages of neural development.<sup>223</sup>

Overall, the evidence from iPSC studies of bipolar disorder on the dysfunctions linked to the glutamatergic, GABAergic and dopaminergic systems or on the excitatory–inhibitory imbalance is still scarce and further studies are required to improve knowledge on the topic.

## Defects in ion channel signalling

Genetic studies of schizophrenia and bipolar disorder have highlighted how the expression of different genes related to activity of voltage-gated cation channels can be linked to the development of these 2 psychiatric disorders.<sup>224</sup> In fact, gene variants of potassium and calcium channels have been

related to increased risk of developing schizophrenia, given the fundamental role of these channels in the regulation of several processes including neural plasticity, myelination, circadian neuronal rhythm, and energy regulation.<sup>56</sup>

Furthermore, an association between SNPs within calcium channel genes — such as *CACNA1C*, *CACNA1D*, and *CACNG2* — and bipolar disorder has been consistently reported.<sup>57,225</sup>

## Alterations in schizophrenia models

One study showed that iPSC-derived neurons from 13 patients with schizophrenia had different alterations in electrophysiological measures related to sodium channel function, such as an increase in membrane resistance and in the number of sodium current peaks.<sup>226</sup> Alterations in the sodium channel function can severely affect the generation of action potentials and spike timing, which are critical processes for effective brain development and normal functioning.<sup>226</sup> The results were analyzed against a detailed clinical and cognitive characterization of the patients included in the study, showing that electrophysiological measures recorded in iPSCs could be employed to predict the severity of positive symptoms and cognitive deficits in these patients with schizophrenia.

## Alterations in bipolar disorder and calcium signalling

Aberrant calcium signalling seems to be one of the primary features of the pathophysiological mechanisms of bipolar disorder. An iPSC study showed that neurons derived from iPSCs of patients with bipolar disorder presented alterations in the expression of calcium membrane receptors and calcium influx dynamics, compared with cells derived from healthy controls.<sup>152</sup> Furthermore, 1 study analyzed RNA expression of NPCs produced from iPSCs of patients with bipolar disorder, showing both increases and decreases in expression of the different genes controlling the levels of calcium channels subunits.<sup>140</sup> Finally, 1 study with iPSCs showed that, in neurons derived from patients with bipolar disorder, a hyperactivity in calcium signalling can be recorded, compared with cells from healthy donors.<sup>227</sup> Furthermore, calcium activity was restored to physiologic levels in neurons treated with lithium, but only in cells derived from patients who were clinically responsive to lithium.<sup>227</sup>

According to the evidence from different studies, defects in calcium signalling seem to play a critical role in the pathophysiology of bipolar disorder, given the association of calcium dysfunctions with synaptic plasticity and homeostasis of the central nervous system. A better insight on the role of calcium in the pathophysiology of bipolar disorder would be beneficial for the development of new effective treatments.<sup>139</sup>

## Mitochondrial dysfunctions

Alterations in mitochondria have been linked to aberrant synaptic maturation and remodelling because of their primary role in cellular respiration, regulation of intracellular



calcium, and cellular apoptosis.<sup>228</sup> In recent years, more studies have reported the presence of various defects in mitochondria in schizophrenia and bipolar disorder, such as alterations in calcium signalling and buffering, reduction in the production of adenosine triphosphate (ATP), and aberrations in mitochondrial size and density.<sup>229,230</sup>

### *Evidence in schizophrenia models*

The 22q11.2 deletion has been associated with mitochondrial dysfunction.<sup>138,231–233</sup> Li and colleagues<sup>232</sup> produced neurons from iPSCs derived from patients with the 22q11.2 deletion who either had schizophrenia or did not present with any psychiatric diagnosis, showing that neurons derived from patients with this mutation had lower ATP levels and lower electronic transport chain activity than those derived from deletion carriers without schizophrenia, which expressed significantly higher electron transport chain activity than even neurons from healthy controls without the mutation. This suggests that, in the absence of the clinical manifestation of the disorder, a compensatory mechanism might be present in response to the alterations caused by the 22q11.2 deletion.<sup>232</sup> Furthermore, one study that developed cerebral organoid from patients with schizophrenia showed deficits in mitochondrial functioning, basal oxygen consumption rate, and ATP production, compared with organoids derived from healthy donors.<sup>234</sup>

### *Evidence in bipolar disorder models*

An iPSC study evaluated mitochondrial function in neurons generated from patients with bipolar disorder.<sup>227</sup> This study showed that mitochondrial membrane potential in neurons from patients was increased, while the size of the mitochondria was reduced and overall neurons presented a generalized hyperexcitability, compared with iPSCs derived from healthy controls.<sup>227</sup> Furthermore, researchers have theorized that the increased membrane potential of mitochondria might be consequential to the hyperexcitability status of neurons of patients affected by bipolar disorder.<sup>227</sup> Interestingly, the neuronal excitability and mitochondria activity of iPSCs are influenced by treatments with lithium. As a matter of fact, alterations in excitability were rescued using lithium only in cell cultures derived from lithium-responsive patients.<sup>227</sup> In addition, lithium treatment improved the oxygen consumption rate and glycolytic rate only in mitochondria of NPCs derived from iPSCs of lithium-responsive patients with bipolar disorder, while valproate treatment improved these parameters in NPCs of lithium-nonresponsive patients with bipolar disorder.<sup>195</sup> This evidence suggests that the efficacy of treatments could be assessed by recording changes in mitochondrial functioning in response to pharmacological treatments. However, this finding needs further replication since another study found that the mitochondrial membrane potential of NPCs was actually lower in iPSCs derived from patients with bipolar disorder, including both lithium-responders and lithium-nonresponders, compared with healthy controls.<sup>235</sup> Furthermore, this alteration was not rescued by lithium or

valproate, regardless of the clinical responsiveness to lithium of the patients.<sup>235</sup> On the other side, one study that developed cerebral organoids from patients with schizophrenia and those with bipolar disorder did not detect any defects in basal oxygen consumption rate and ATP production of mitochondria in models of bipolar disorder.<sup>234</sup>

### **Understanding the evidence from iPSC studies**

The current review provides a comprehensive overview on how iPSC studies hold promise for advancing our understanding of the main neuropathological alterations linked to schizophrenia and bipolar disorder.

For instance, iPSC models have been largely employed to investigate the effects of genetic variations, previously recognized as risk factors for schizophrenia and bipolar disorder, on cellular phenotypes.<sup>100,111,138,184,232</sup> For example, allelic variations of the *DISC1* gene in iPSC models have been associated with alterations within the Wnt pathway, leading to defects in neuronal proliferation, expression of fate markers,<sup>111</sup> and formation of pre- and postsynaptic elements.<sup>206,236,237</sup> In addition, variations in genes related to calcium channels — which can result in alterations in resting membrane potential of neurons — have been connected to both disorders, given the fundamental role of intracellular homeostasis of calcium in signalling processes, neural developmental pathways, and synaptic plasticity.<sup>25,238</sup> Finally, genes involved in neuronal cell survival, proliferation, and differentiation have also shown a link to both disorders.<sup>109,239</sup>

Overall, strong evidence suggests common genetic factors for schizophrenia and bipolar disorder, but the genetic and phenotypic architecture of these disorders is highly complex, characterized by only a partial degree of overlap.<sup>25</sup> In fact, the detection of shared genetic risk factors of the 2 disorders may be influenced by the subtyping of the patients considered, with type I bipolar disorder more strongly related to schizophrenia.<sup>43</sup> However, no iPSC study has been designed to explore the effects of shared genetic risk factors and mechanisms that may be at the core of the onset of one disorder rather than the other.

In addition to studies focusing on specific genetic factors, iPSC models have improved our understanding of the defects present in early neurodevelopmental processes in these 2 conditions.<sup>94</sup> The iPSC studies reviewed seem to suggest that neurodevelopmental alterations in schizophrenia and bipolar disorder, such as the ones frequently found within the Wnt signalling cascade, cause a series of defects in proliferation, differentiation, and migration of NPCs (Figure 1).<sup>94,95,99,111</sup>

The presence of common neurodevelopmental aberrations may also reflect the correlates of trait-related features shared by both pathologies. For instance, a study investigating neuronal abnormalities using neuroimaging of adolescents who experienced an early onset of either schizophrenia or bipolar disorder with psychotic features showed that both groups presented cellular abnormalities, but these were more widespread in the schizophrenia group.<sup>240</sup> Conversely, extracellular abnormalities could be traced only in adolescents with bipolar disorder.<sup>240</sup> In line with this, Murray and colleagues<sup>38</sup>

hypothesized that patients with certain genetic predisposition to psychosis may be more likely to develop type I bipolar disorder by default, while the presence of additional altered neurodevelopmental genes or environmental factors would tilt the trajectory toward the onset of schizophrenia. Therefore, an interesting approach, only rarely employed in the iPSC studies reviewed, has been to focus on patients with shared clinical manifestations of the 2 disorders. Sawada and colleagues<sup>109</sup> included iPSCs with 3 pairs of twins, 1 discordant for schizoaffective disorder (bipolar type) and the other 2 discordant for schizophrenia. Overall, deficiencies in the Wnt signalling pathway were traced in iPSCs of the patient with schizoaffective disorder, which led to a reduction in cell proliferation, a substantial shift toward the ventral fate, and an excitatory–inhibitory imbalance tilted toward GABAergic interneuron differentiation.<sup>109</sup> Furthermore, similar genetic alterations (mainly involving GABAergic transmission) were detected in both schizoaffective- (bipolar type) and schizophrenia-derived iPSCs.<sup>109</sup> Therefore, this study provides an interesting view on the existence of a continuum between schizophrenia and bipolar disorder, tracing the possible shared mechanistic basis of psychotic symptoms through a dimensional rather than categorical approach. This is in accordance with 1 neuroimaging study that highlighted that patients with early-onset bipolar disorder (before age 18 yr) or bipolar disorder with psychosis showed neurodevelopmental alterations (as often recorded in schizophrenia) in cortical sulci morphology, compared with other patients with bipolar disorder or healthy controls.<sup>241</sup> Other neuroimaging studies seem to report contrasting results since patients with schizophrenia and patients with bipolar disorder with psychotic features showed no shared alterations, supporting a certain grade of specificity in the development of schizophrenia.<sup>242,243</sup>

Schizophrenia and bipolar disorder present several trait-related features, but the neurodevelopmental alterations underlying the different state-related features of schizophrenia and bipolar disorder remain elusive. Furthermore, even within the same diagnostic category, differences in the iPSC alterations detected have been observed, probably owing to the heterogeneity of the patients with bipolar disorder selected for the studies.<sup>139,140</sup> For instance, studies using iPSC from patients with bipolar disorder reported either an increase<sup>140</sup> or a decrease<sup>139</sup> in the levels of the PAX6 protein, affecting the normal fate of neuronal differentiation in bipolar disorder–derived iPSCs, or in the concentration of dopamine receptors, depending on patient’s responsiveness to lithium treatment.<sup>222</sup>

Overall, the results provided by the iPSC studies are heterogeneous but reinforce the theory that schizophrenia and bipolar disorder present several aberrations in neurodevelopment. However, the scarce number of studies using iPSC models of both disorders, using the same protocol, hinders the depiction of which specific mechanistic biological cascades determine the development of either schizophrenia or bipolar disorder at a later stage in life.

Patient-derived neurons display a series of morphological defects such as reductions in neuronal connectivity, neurite outgrowth, and synaptic markers (Figure 1). No specific

phenotypic difference was detected in a study involving both schizophrenia- or bipolar disorder–derived neurons since both showed dendrite shortening and decreased synapse numbers.<sup>164</sup> These results highlight the presence of common characteristics of the neurobiology of these disorders, which can be also linked to alterations in morphology and connectivity found in neuroimaging and post-mortem studies.<sup>154,155</sup>

In addition, certain neuroimaging studies describe patients with bipolar disorder having functional connectivity similar to controls, while patients with schizophrenia being more similar to those with schizoaffective disorder, who might represent a phenotype intermediate between schizophrenia and bipolar disorder.<sup>239</sup> However, tracing links between iPSC results, which could highlight the etiopathogenesis of these disorders, and results from neuroimaging studies, which may be influenced by the impact of the illness or the use of medication, remains challenging.

The various iPSC studies considered here reinforce the idea of a series of aberrations in neurotransmission. Specifically, the studies highlighted interspersed alterations in glutamatergic, GABAergic, and dopaminergic systems ranging from defects in receptors, in enzymes controlling synthesis of neurotransmitters, and in functionality of synaptic vesicles in schizophrenia.<sup>163,167</sup> Furthermore, iPSC models have allowed detailed exploration of the excitatory–inhibitory imbalance, which is regarded as one of the core alterations present in schizophrenia and bipolar disorder.<sup>94,109</sup> In schizophrenia, specifically, it seems that the excitatory–inhibitory imbalance may be a primary pathophysiological mechanism for the onset of the disorder, while the dopaminergic deficits emerge later in the cascade, when the illness is fully manifested.<sup>203</sup> In this case, it is challenging to dissect how the shared defects in neurotransmission could be specifically linked to either schizophrenia or bipolar disorder. For instance, a study that compared iPSC of patients with either schizophrenia or bipolar disorder detected upregulation and downregulation of genes in glutamatergic and GABAergic neurons in both psychiatric models.<sup>164</sup> However, alterations in gene expression, related to cell adhesion and neural function in these neurons, were more prominent in the schizophrenia model than the model of bipolar disorder.<sup>164</sup> These observations suggest that neuronal dysfunction in both disorders can originate from either abnormal excitation or inhibition, depending on the patient’s background. Furthermore, development of schizophrenia may be related to the presence of a higher number of aberrations in genes involved in the formation of the neuronal system, compared with bipolar disorder models.<sup>25</sup>

Finally, 1 study investigated the involvement of mitochondrial dysfunctions in cerebral organoids from patients with schizophrenia and those with bipolar disorder.<sup>234</sup> Specifically, the schizophrenia organoids showed deficits in basal oxygen consumption rate and ATP production compared with controls.<sup>234</sup> Conversely, no abnormal patterns were reported in the mitochondrial function of bipolar disorder organoids, potentially indicating a specific pathway of the neurobiology of schizophrenia. However, bipolar disorder showed specific dysregulation of gene expression in proteins controlling the

interactions between the endoplasmic reticulum and the mitochondria.<sup>234</sup> This suggests that the altered mitochondrial dysfunctions recorded in both diseases may primarily result from distinct pathways, with schizophrenia arising more from dysfunctions in energy production, while bipolar disorder arising more from aberrant interactions between the endoplasmic reticulum and mitochondria.

## Understanding the limitations of iPSCs and future prospects

Although the advent of iPSCs has allowed the creation of models that can efficiently track aberrations in molecular cascades present in neuropsychiatric disorders such as schizophrenia and bipolar disorder, some limits in literature and in the employment of this technique should be considered. In particular, iPSC models and results may vary depending on the culturing conditions, the type and number of cell lines employed, differentiation protocols, and freezing–thawing cycles of the cultures, hindering the reproducibility of results.<sup>244</sup> Furthermore, since neuronal development includes several steps in which multifactorial molecular pathways are involved, induced neurons cannot perfectly reproduce the complexity of processes that may be essential to the progression of the disease, such as neural migration, specification, or maturation, especially in 2D cell cultures.<sup>85</sup>

Finally, some limits regarding the artificial reprogramming of iPSCs (i.e., gene manipulations or exogenous treatments) should be taken into account. In general, the reprogramming process causes an alteration of the epigenetic landscape of the iPSCs from modification of the histones and DNA in specific sites.<sup>245</sup> Studies that investigated the mechanisms underlying the reprogramming processes have also highlighted 2 major factors related to residual epigenetic memory of the somatic donor cells, specifically residual DNA methylation of their tissue of origin, namely that the genetic background of individual donors can influence iPSC features, which can be unrelated to any pathological state, and that the original cell type used for the extraction, which can affect or bias the differentiation capacity of the iPSC models, favours differentiation along their lineage of origin while restricting alternative lineages.<sup>246</sup> One approach to reduce the question of genetic diversity is to employ genetically related people under a family-based paradigm, including donors from members of the same family either affected by psychiatric disorders or not.<sup>140</sup>

To overcome these limitations, other cellular models using adult stem cells have been recently implemented for cell-based disease models. In 2010, multilineage-differentiating stress-enduring (MUSE) cells were isolated from the mononuclear cell fraction of the bone marrow; these are non-cancerous, stress-resistant, and pluripotent endogenous stem cells.<sup>247</sup> These cells can be easily isolated from human fibroblasts, bone marrow, and adipose tissue.<sup>247,248</sup> Furthermore, the laboratory procedure to obtain MUSE cells, unlike that used for iPSC, does not involve gene manipulations or exogenous treatments, since MUSE cells are spontaneously capable of differentiating into phenotypes belonging to the 3 different embryonal sheets, enabling researchers to analyze

patient-derived MUSE cells with their natural, original genomic background.<sup>249</sup> To date, few studies have used MUSE cells, especially in the fields of neurology and oncology.<sup>250–252</sup> Interestingly, a study investigated the effects of mutations in the coding region of the *IQSEC2* gene, which have been associated with intellectual disability and autism in MUSE cells derived from a patient with intellectual disability.<sup>253,254</sup> The patients' cultures showed a reduced number of cycling cells and increased senescence compared with control cultures. In addition, deficits in neuroglial commitment and differentiation were detected in stem cells of patients.<sup>254</sup>

Another factor that may have influenced the heterogeneity of results discussed in the current review is that, from a clinical point of view, few study protocols provided a detailed clinical characterization of the sample.<sup>139,140,220,226,227</sup> In fact, most studies did not specify the clinical profile of the enrolled participants, and provided only the general diagnosis, such as schizophrenia or bipolar disorder. Defining only the diagnosis poses a major limitation for 2 reasons, namely the overlap between schizophrenia and bipolar disorder in clinical presentation and the great heterogeneity within the spectrum of each psychiatric disorder. Therefore, common alterations traced in schizophrenia and bipolar disorder in neurobiological pathways may be linked to psychopathological or clinical dimensions rather than to a specific diagnosis.<sup>27,32,33,255,256</sup> Consequently, a detailed clinical characterization — including the content of psychotic symptoms, the temporal pattern of the association between psychotic symptoms and mood symptoms, and neurodevelopmental trajectories — may help to distinguish more clearly which patients showed substantial overlap in terms of genetic background, etiopathogenetic mechanisms, clinical presentations, and outcomes.

People presenting with the same diagnosis of either schizophrenia or bipolar disorder show a large heterogeneity in clinical presentation and extreme variability for the biological factors, neurobiological markers, and environmental variables associated with their pathology.<sup>257,258</sup> This inter-individual variability has hindered research in the field of schizophrenia and bipolar disorder since it has also affected the identification of the pathophysiological mechanisms underpinning their onset.

Therefore, a possible strategy to facilitate the advancement of knowledge in the field of the etiopathogenesis of these pathologies is trying to reduce interindividual heterogeneity by studying specific and more homogeneous subtypes of the aforementioned disorders. For instance, the diagnosis of deficit schizophrenia identifies a subgroup of patients with schizophrenia, presenting relatively homogeneous characteristics.<sup>259,260</sup> In particular, people with deficit schizophrenia, compared with those with nondeficit schizophrenia, are characterized by poor premorbid adjustment, more frequently insidious onset, greater severity of negative symptoms and cognitive impairment, worse long-term outcomes, and higher frequency of neurologic soft signs.<sup>259</sup> The latter constitute a broad range of subtle neurologic deficits, which have been strongly linked to impairments in neurodevelopmental trajectories.<sup>261</sup>

In the context of bipolar disorder, the distinction between rapid cycling bipolar disorder (i.e.,  $\geq 4$  episodes of mood disturbance within 12 mo) and non-rapid cycling bipolar disorder is particularly promising to better characterize the clinical profile of patients. In fact, patients with rapid cycling bipolar disorder, compared with those with non-rapid cycling bipolar disorder, present different neurobiological alterations (e.g., a reduction in volumes of the ventrolateral PFC), an earlier onset, unfavourable outcomes in terms of number of hospital admissions, treatment response, and suicide attempts.<sup>46,262</sup> Furthermore, patients with rapid cycling bipolar disorder have a higher rate of comorbidity with attention-deficit/hyperactivity disorder, which is also manifested at the level of shared polygenic risk, suggesting the presence of common alterations in neurodevelopmental processes.<sup>46,262</sup> Therefore, it appears particularly relevant to use an approach based on the investigation of neurodevelopmental abnormalities in more homogeneous subtypes of the disorders, such as patients with deficit schizophrenia or patients with rapid cycling bipolar disorder.

## Conclusion

Schizophrenia and bipolar disorder are psychiatric disorders with a complex genetic vulnerability for which animal models cannot recapitulate all disease-related pathophysiology. The advances in the development of iPSC models have allowed more detailed characterization of these 2 disorders, including a series of aberrations in neurogenesis, axon development, neurotransmission, and mitochondrial functionality. The complexity and heterogeneity of the results suggest that the development of schizophrenia and bipolar disorder may be linked to different and multiple types of alterations. Future research should consider using alternative stem cell models, such as MUSE cells, in addition to using a detailed clinical characterization to confirm a continuum between schizophrenia and bipolar disorder, and to achieve a more comprehensive understanding of the specific elements separating the neurobiology of these 2 disorders.

**Acknowledgements:** This authors acknowledge support from #NEXTGENERATIONEU and the Ministry of University and Research, National Recovery and Resilience Plan.

**Affiliations:** From the University of Campania “Luigi Vanvitelli”, Naples, Italy.

**Competing interests:** Silvana Galderisi reports consulting fees from Gedeon Richter; honoraria from Angelini, Boehringer Ingelheim, Gedeon Richter, Janssen, Lundbeck, Otsuka, Recordati, Rovi, and Sunovion; and participation on data safety monitoring boards with Angelini, Boehringer Ingelheim, Janssen, and Rovi. Giulia Maria Giordano reports consulting fees from Angelini. Armida Mucci reports consulting fees from Pierre Fabre, Rovi, and Boehringer Ingelheim; patents with Pierre Fabre; and participation on data safety monitoring boards with Angelini and Boehringer Ingelheim. No other competing interests were declared.

**Contributors:** All of the authors contributed to the conception and design of the work, drafted the manuscript, revised it critically for important intellectual content, gave final approval of the version to be published and agreed to be accountable for all aspects of the work.

**Content licence:** This is an Open Access article distributed in accordance with the terms of the Creative Commons Attribution (CC BY-NC-ND 4.0) licence, which permits use, distribution and reproduction in any medium, provided that the original publication is properly cited, the use is noncommercial (i.e., research or educational use), and no modifications or adaptations are made. See: <https://creativecommons.org/licenses/by-nc-nd/4.0/>

## References

1. Robinson N, Bergen SE. Environmental risk factors for schizophrenia and bipolar disorder and their relationship to genetic risk: current knowledge and future directions. *Front Genet* 2021;12:686666.
2. Kloiber S, Rosenblat JD, Husain MI, et al. Neurodevelopmental pathways in bipolar disorder. *Neurosci Biobehav Rev* 2020;112:213-26.
3. Wabbeh MH, Avramopoulos D. Gene-environment interactions in schizophrenia: a literature review. *Genes (Basel)* 2021;12:1850.
4. Klingberg T, Judd N, Sauce B. Assessing the impact of environmental factors on the adolescent brain: the importance of regional analyses and genetic controls. *World Psychiatry* 2022;21:146-7.
5. McGrath J, Saha S, Chant D, et al. Schizophrenia: a concise overview of incidence, prevalence, and mortality. *Epidemiol Rev* 2008;30:67-76.
6. Merikangas KR, Akiskal HS, Angst J, et al. Lifetime and 12-month prevalence of bipolar spectrum disorder in the National Comorbidity Survey replication. *Arch Gen Psychiatry* 2007;64:543-52.
7. Grande I, Berk M, Birmaher B, et al. Bipolar disorder. *Lancet* 2016;387:1561-72.
8. GBD 2019 Mental Disorders Collaborators. Global, regional, and national burden of 12 mental disorders in 204 countries and territories, 1990-2019: a systematic analysis for the Global Burden of Disease Study 2019. *Lancet Psychiatry* 2022;9:137-50.
9. Walker ER, McGee RE, Druss BG. Mortality in mental disorders and global disease burden implications: a systematic review and meta-analysis. *JAMA Psychiatry* 2015;72:334-41.
10. Reynolds CF III, Jeste DV, Sachdev PS, et al. Mental health care for older adults: recent advances and new directions in clinical practice and research. *World Psychiatry* 2022;21:336-63.
11. Immonen J, Jääskeläinen E, Korpela H, et al. Age at onset and the outcomes of schizophrenia: a systematic review and meta-analysis. *Early Interop Psychiatry* 2017;11:453-60.
12. McCutcheon RA, Reis Marques T, Howes OD. Schizophrenia—an overview. *JAMA Psychiatry* 2020;77:201-10.
13. Sass L. Subjectivity, psychosis and the science of psychiatry. *World Psychiatry* 2022;21:165-6.
14. Perrottelli A, Giordano GM, Koenig T, et al. Electrophysiological correlates of reward anticipation in subjects with schizophrenia: an erp microstate study. *Brain Topogr* 2023 July 5 [Epub ahead of print]. doi: 10.1007/s10548-023-00984-7.
15. Mesholam-Gately RI, Johnston D, Keshavan MS. What's in the name “schizophrenia”? A clinical, research and lived experience perspective. *World Psychiatry* 2023;22:156-7.
16. Huxley P, Kraye A, Poole R, et al. Schizophrenia outcomes in the 21st century: a systematic review. *Brain Behav* 2021;11:e02172.
17. Ponce-Correa F, Caqueo-Úrizar A, Berríos R, et al. Defining recovery in schizophrenia: a review of outcome studies. *Psychiatry Res* 2023;322:115134.
18. Correll CU, Solmi M, Croatto G, et al. Mortality in people with schizophrenia: a systematic review and meta-analysis of relative risk and aggravating or attenuating factors. *World Psychiatry* 2022;21:248-71.
19. Crump C, Sundquist K, Winkleby MA, et al. Comorbidities and mortality in bipolar disorder: a Swedish national cohort study. *JAMA Psychiatry* 2013;70:931-9.
20. Scaini G, Valvassori SS, Diaz AP, et al. Neurobiology of bipolar disorders: a review of genetic components, signaling pathways, biochemical changes, and neuroimaging findings. *Braz J Psychiatry* 2020;42:536-51.
21. Kato T. Current understanding of bipolar disorder: Toward integration of biological basis and treatment strategies. *Psychiatry Clin Neurosci* 2019;73:526-40.

22. Leichsenring F, Steinert C, Rabung S, et al. The efficacy of psychotherapies and pharmacotherapies for mental disorders in adults: an umbrella review and meta-analytic evaluation of recent meta-analyses. *World Psychiatry* 2022;21:133-45.
23. McCutcheon RA, Pillinger T, Efthimiou O, et al. Reappraising the variability of effects of antipsychotic medication in schizophrenia: a meta-analysis. *World Psychiatry* 2022;21:287-94.
24. Stein DJ, Shoptaw SJ, Vigo DV, et al. Psychiatric diagnosis and treatment in the 21st century: paradigm shifts versus incremental integration. *World Psychiatry* 2022;21:393-414.
25. Grunze H, Cetkovich-Bakmas M. "Apples and pears are similar, but still different things." Bipolar disorder and schizophrenia — discrete disorders or just dimensions? *J Affect Disord* 2021;290:178-87.
26. Kushima I, Aleksic B, Nakatochi M, et al. Comparative analyses of copy-number variation in autism spectrum disorder and schizophrenia reveal etiological overlap and biological insights. *Cell Rep* 2018;24:2838-56.
27. Lake CR. Schizophrenia and bipolar disorder: no dichotomy, a continuum, or one disease? *Psychiatr Ann* 2010;40:72-5.
28. Luna LP, Radua J, Fortea L, et al. A systematic review and meta-analysis of structural and functional brain alterations in individuals with genetic and clinical high-risk for psychosis and bipolar disorder. *Prog Neuropsychopharmacol Biol Psychiatry* 2022;117:110540.
29. Andreassen OA, Hindley GFL, Frei O, et al. New insights from the last decade of research in psychiatric genetics: discoveries, challenges and clinical implications. *World Psychiatry* 2023;22:4-24.
30. Yamada Y, Matsumoto M, Iijima K, et al. Specificity and continuity of schizophrenia and bipolar disorder: relation to biomarkers. *Curr Pharm Des* 2020;26:191-200.
31. Chakrabarti S, Singh N. Psychotic symptoms in bipolar disorder and their impact on the illness: a systematic review. *World J Psychiatry* 2022;12:1204-32.
32. Pearlson GD. Etiologic, phenomenologic, and endophenotypic overlap of schizophrenia and bipolar disorder. *Annu Rev Clin Psychol* 2015;11:251-81.
33. Raio A, Pergola G, Rampino A, et al. Similarities and differences between multivariate patterns of cognitive and socio-cognitive deficits in schizophrenia, bipolar disorder and related risk. *Schizophrenia (Heidelberg)* 2023;9:11.
34. Nesse RM. Evolutionary psychiatry: foundations, progress and challenges. *World Psychiatry* 2023;22:177-202.
35. Tsitsipa E, Fountoulakis KN. The neurocognitive functioning in bipolar disorder: a systematic review of data. *Ann Gen Psychiatry* 2015;14:42.
36. Birnbaum R, Weinberger DR. Genetic insights into the neurodevelopmental origins of schizophrenia. *Nat Rev Neurosci* 2017;18:727-40.
37. Howes OD, Shatalina E. Integrating the neurodevelopmental and dopamine hypotheses of schizophrenia and the role of cortical excitation-inhibition balance. *Biol Psychiatry* 2022;92:501-13.
38. Murray RM, Sham P, Van Os J, et al. A developmental model for similarities and dissimilarities between schizophrenia and bipolar disorder. *Schizophr Res* 2004;71:405-16.
39. Mandal PK, Gaur S, Roy RG, et al. Schizophrenia, bipolar and major depressive disorders: overview of clinical features, neurotransmitter alterations, pharmacological interventions, and impact of oxidative stress in the disease process. *ACS Chem Neurosci* 2022;13:2784-802.
40. Lichtenstein P, Yip BH, Björk C, et al. Common genetic determinants of schizophrenia and bipolar disorder in Swedish families: a population-based study. *Lancet* 2009;373:234-9.
41. Mortensen PB, Pedersen CB, Melbye M, et al. Individual and familial risk factors for bipolar affective disorders in Denmark. *Arch Gen Psychiatry* 2003;60:1209-15.
42. Abi-Dargham A, Moeller SJ, Ali F, et al. Candidate biomarkers in psychiatric disorders: state of the field. *World Psychiatry* 2023;22:236-62.
43. Stahl EA, Breen G, Forstner AJ, et al. Genome-wide association study identifies 30 loci associated with bipolar disorder. *Nat Genet* 2019;51:793-803.
44. Lee SH, Ripke S, Neale BM, et al. Genetic relationship between five psychiatric disorders estimated from genome-wide SNPs. *Nat Genet* 2013;45:984-94.
45. Charney AW, Ruderfer DM, Stahl EA, et al. Evidence for genetic heterogeneity between clinical subtypes of bipolar disorder. *Transl Psychiatry* 2017;7:e993.
46. Coombes BJ, Markota M, Mann JJ, et al. Dissecting clinical heterogeneity of bipolar disorder using multiple polygenic risk scores. *Transl Psychiatry* 2020;10:314.
47. Mullins N, Forstner AJ, O'Connell KS, et al. Genome-wide association study of more than 40,000 bipolar disorder cases provides new insights into the underlying biology. *Nat Genet* 2021;53:817-29.
48. Rees E, Kirov G. Copy number variation and neuropsychiatric illness. *Curr Opin Genet Dev* 2021;68:57-63.
49. Green EK, Rees E, Walters JT, et al. Copy number variation in bipolar disorder. *Mol Psychiatry* 2016;21:89-93.
50. Charney AW, Stahl EA, Green EK, et al. Contribution of rare copy number variants to bipolar disorder risk is limited to schizoaffective cases. *Biol Psychiatry* 2019;86:110-9.
51. Harrison PJ. Recent genetic findings in schizophrenia and their therapeutic relevance. *J Psychopharmacol* 2015;29:85-96.
52. Goff DC, Coyle JT. The emerging role of glutamate in the pathophysiology and treatment of schizophrenia. *Am J Psychiatry* 2001;158:1367-77.
53. Olney JW, Newcomer JW, Farber NB. NMDA receptor hypofunction model of schizophrenia. *J Psychiatr Res* 1999;33:523-33.
54. Snyder MA, Gao WJ. NMDA hypofunction as a convergence point for progression and symptoms of schizophrenia. *Front Cell Neurosci* 2013;7:31.
55. Yoshimizu T, Pan JQ, Mungenast AE, et al. Functional implications of a psychiatric risk variant within CACNA1C in induced human neurons. *Mol Psychiatry* 2015;20:162-9.
56. Imbrici P, Camerino DC, Tricarico D. Major channels involved in neuropsychiatric disorders and therapeutic perspectives. *Front Genet* 2013;4:76.
57. Balaraman Y, Lahiri DK, Nurnberger JI. Variants in ion channel genes link phenotypic features of bipolar illness to specific neurobiological process domains. *Mol Neuropsychiatry* 2015;1:23-35.
58. Marchisella F, Coffey ET, Hollos P. Microtubule and microtubule associated protein anomalies in psychiatric disease. *Cytoskeleton (Hoboken)* 2016;73:596-611.
59. Oraki Kohshour M, Papiol S, Ching CRK, et al. Genomic and neuroimaging approaches to bipolar disorder. *BJPsych Open* 2022;8:e36.
60. Topol A, Zhu S, Tran N, et al. Altered WNT signaling in human induced pluripotent stem cell neural progenitor cells derived from four schizophrenia patients. *Biol Psychiatry* 2015;78:e29-34.
61. Sideli L, Quigley H, La Cascia C, et al. Cannabis use and the risk for psychosis and affective disorders. *J Dual Diagn* 2020;16:22-42.
62. Marwaha S, Winsper C, Bebbington P, et al. Cannabis use and hypomania in young people: a prospective analysis. *Schizophr Bull* 2018;44:1267-74.
63. Marangoni C, Hernandez M, Faedda GL. The role of environmental exposures as risk factors for bipolar disorder: a systematic review of longitudinal studies. *J Affect Disord* 2016;193:165-74.
64. Chudal R, Sourander A, Polo-Kantola P, et al. Perinatal factors and the risk of bipolar disorder in Finland. *J Affect Disord* 2014;155:75-80.
65. Parboosing R, Bao Y, Shen L, et al. Gestational influenza and bipolar disorder in adult offspring. *JAMA Psychiatry* 2013;70:677-85.
66. Bortolato B, Köhler CA, Evangelou E, et al. Systematic assessment of environmental risk factors for bipolar disorder: an umbrella review of systematic reviews and meta-analyses. *Bipolar Disord* 2017;19:84-96.
67. Jiménez E, Solé B, Arias B, et al. Impact of childhood trauma on cognitive profile in bipolar disorder. *Bipolar Disord* 2017;19:363-74.
68. Rootes-Murdy K, Edmond JT, Jiang W, et al. Clinical and cortical similarities identified between bipolar disorder I and schizophrenia: a multivariate approach. *Front Hum Neurosci* 2022;16:1001692.
69. Ellison-Wright I, Bullmore E. Anatomy of bipolar disorder and schizophrenia: a meta-analysis. *Schizophr Res* 2010;117:1-12.
70. Keshavan MS, Collin G, Guimond S, et al. Neuroimaging in Schizophrenia. *Neuroimaging Clin N Am* 2020;30:73-83.
71. Adler CM, Holland SK, Schmithorst V, et al. Abnormal frontal white matter tracts in bipolar disorder: a diffusion tensor imaging study. *Bipolar Disord* 2004;6:197-203.
72. Sarrazin S, Poupon C, Linke J, et al. A multicenter tractography study of deep white matter tracts in bipolar I disorder: psychotic features and interhemispheric disconnectivity. *JAMA Psychiatry* 2014;71:388-96.
73. Li J, Kale Edmiston E, Chen K, et al. A comparative diffusion tensor imaging study of corpus callosum subregion integrity in bipolar disorder and schizophrenia. *Psychiatry Res* 2014;221:58-62.

74. Hozer F, Houenou J. Can neuroimaging disentangle bipolar disorder? *J Affect Disord* 2016;195:199-214.
75. Wang X, Cheng B, Roberts N, et al. Shared and distinct brain fMRI response during performance of working memory tasks in adult patients with schizophrenia and major depressive disorder. *Hum Brain Mapp* 2021;42:5458-76.
76. Hulshoff Pol HE, van Baal GCM, Schnack HG, et al. Overlapping and segregating structural brain abnormalities in twins with schizophrenia or bipolar disorder. *Arch Gen Psychiatry* 2012;69:349-59.
77. Cheon EJ, Bearden CE, Sun D, et al. Cross disorder comparisons of brain structure in schizophrenia, bipolar disorder, major depressive disorder, and 22q11.2 deletion syndrome: a review of ENIGMA findings. *Psychiatry Clin Neurosci* 2022;76:140-61.
78. Hibar DP, Westlye LT, Doan NT, et al. Cortical abnormalities in bipolar disorder: an MRI analysis of 6503 individuals from the ENIGMA Bipolar Disorder Working Group. *Mol Psychiatry* 2018;23:932-42.
79. van Erp TGM, Walton E, Hibar DP, et al. Cortical brain abnormalities in 4474 individuals with schizophrenia and 5098 control subjects via the Enhancing Neuro Imaging Genetics Through Meta Analysis (ENIGMA) Consortium. *Biol Psychiatry* 2018;84:644-54.
80. Li Z, Chen J, Yu H, et al. Genome-wide association analysis identifies 30 new susceptibility loci for schizophrenia. *Nat Genet* 2017;49:1576-83.
81. Rees E, Walters JT, Georgieva L, et al. Analysis of copy number variations at 15 schizophrenia-associated loci. *Br J Psychiatry* 2014;204:108-14.
82. Schizophrenia Working Group of the Psychiatric Genomics Consortium. Biological insights from 108 schizophrenia-associated genetic loci. *Nature* 2014;511:421-7.
83. Dumas G. From inter-brain connectivity to inter-personal psychiatry. *World Psychiatry* 2022;21:214-5.
84. Epskamp S, Isvoranu AM. New trends in network modeling of psychopathology. *World Psychiatry* 2022;21:463-4.
85. Poliwoda S, Noor N, Downs E, et al. Stem cells: a comprehensive review of origins and emerging clinical roles in medical practice. *Orthop Rev (Pavia)* 2022;14:37498.
86. McNeill RV, Ziegler GC, Radtke F, et al. Mental health dished up—the use of iPSC models in neuropsychiatric research. *J Neural Transm (Vienna)* 2020;127:1547-68.
87. Yamanaka S, Blau HM. Nuclear reprogramming to a pluripotent state by three approaches. *Nature* 2010;465:704-12.
88. Apostolou E, Stadtfeld M. Cellular trajectories and molecular mechanisms of iPSC reprogramming. *Curr Opin Genet Dev* 2018;52:77-85.
89. Yu J, Vodyanik MA, Smuga-Otto K, et al. Induced pluripotent stem cell lines derived from human somatic cells. *Science* 2007;318:1917-20.
90. De Los Angeles A, Fernando MB, Hall NAL, et al. Induced pluripotent stem cells in psychiatry: an overview and critical perspective. *Biol Psychiatry* 2021;90:362-72.
91. Das D, Feuer K, Wahbeh M, et al. Modeling psychiatric disorder biology with stem cells. *Curr Psychiatry Rep* 2020;22:24.
92. Kathuria A, Lopez-Lengowski K, Jagtap SS, et al. Transcriptomic landscape and functional characterization of induced pluripotent stem cell-derived cerebral organoids in schizophrenia. *JAMA Psychiatry* 2020;77:745-54.
93. Srikanth P, Lagomarsino VN, Muratore CR, et al. Shared effects of *DISC1* disruption and elevated WNT signaling in human cerebral organoids. *Transl Psychiatry* 2018;8:77.
94. Räsänen N, Tiihonen J, Koskivi M, et al. The iPSC perspective on schizophrenia. *Trends Neurosci* 2022;45:8-26.
95. Moslem M, Olive J, Falk A. Stem cell models of schizophrenia, what have we learned and what is the potential? *Schizophr Res* 2019;210:3-12.
96. Powell SK, O'Shea CP, Shannon SR, et al. Investigation of schizophrenia with human induced pluripotent stem cells. *Adv Neurobiol* 2020;25:155-206.
97. Collo G, Mucci A, Giordano GM, et al. Negative symptoms of schizophrenia and dopaminergic transmission: translational models and perspectives opened by iPSC techniques. *Front Neurosci* 2020;14:632.
98. Miller ND, Kelsoe JR. Unraveling the biology of bipolar disorder using induced pluripotent stem-derived neurons. *Bipolar Disord* 2017;19:544-51.
99. O'Shea KS, McInnis MG. Neurodevelopmental origins of bipolar disorder: iPSC models. *Mol Cell Neurosci* 2016;73:63-83.
100. Liu YN, Lu SY, Yao J. Application of induced pluripotent stem cells to understand neurobiological basis of bipolar disorder and schizophrenia. *Psychiatry Clin Neurosci* 2017;71:579-99.
101. Hoffmann A, Sportelli V, Ziller M, et al. From the psychiatrist's couch to induced pluripotent stem cells: bipolar disease in a dish. *Int J Mol Sci* 2018;19:770.
102. Yun S, Reynolds RP, Masiulis I, et al. Re-evaluating the link between neuropsychiatric disorders and dysregulated adult neurogenesis. *Nat Med* 2016;22:1239-47.
103. Colantuoni C, Lipska BK, Ye T, et al. Temporal dynamics and genetic control of transcription in the human prefrontal cortex. *Nature* 2011;478:519-23.
104. Werling DM, Pochareddy S, Choi J, et al. Whole-genome and RNA sequencing reveal variation and transcriptomic coordination in the developing human prefrontal cortex. *Cell Rep* 2020;31:107489.
105. Sey NYA, Hu B, Mah W, et al. A computational tool (H-MAGMA) for improved prediction of brain-disorder risk genes by incorporating brain chromatin interaction profiles. *Nat Neurosci* 2020;23:583-93.
106. Shohat S, Ben-David E, Shifman S. Varying intolerance of gene pathways to mutational classes explain genetic convergence across neuropsychiatric disorders. *Cell Rep* 2017;18:2217-27.
107. Selemon LD, Zecevic N. Schizophrenia: a tale of two critical periods for prefrontal cortical development. *Transl Psychiatry* 2015;5:e623.
108. Bergdolt L, Dunaevsky A. Brain changes in a maternal immune activation model of neurodevelopmental brain disorders. *Prog Neurobiol* 2019;175:1-19.
109. Sawada T, Chater TE, Sasagawa Y, et al. Developmental excitation-inhibition imbalance underlying psychoses revealed by single-cell analyses of discordant twins-derived cerebral organoids. *Mol Psychiatry* 2020;25:2695-711.
110. Brennand KJ, Simone A, Jou J, et al. Modelling schizophrenia using human induced pluripotent stem cells. *Nature* 2011;473:221-5.
111. Srikanth P, Han K, Callahan DG, et al. Genomic *DISC1* disruption in hiPSCs alters Wnt signaling and neural cell fate. *Cell Rep* 2015;12:1414-29.
112. Hathy E, Szabo E, Varga N, et al. Investigation of de novo mutations in a schizophrenia case-parent trio by induced pluripotent stem cell-based in vitro disease modeling: convergence of schizophrenia- and autism-related cellular phenotypes. *Stem Cell Res Ther* 2020;11:504.
113. Koskivi M, Lehtonen Š, Trontti K, et al. Patient iPSC-astrocytes show transcriptional and functional dysregulation in schizophrenia. *bioRxiv* 2020:2020.10.23.350413.
114. Steinhart Z, Angers S. Wnt signaling in development and tissue homeostasis. *Development* 2018;145:dev146589.
115. Komiya Y, Habas R. Wnt signal transduction pathways. *Organogenesis* 2008;4:68-75.
116. MacDonald BT, Tamai K, He XJDC. Wnt/ $\beta$ -catenin signaling: components, mechanisms, and diseases. *Dev Cell* 2009;17:9-26.
117. Ma J-H, Sun X-Y, Guo T-J, et al. Association on *DISC1* SNPs with schizophrenia risk: a meta-analysis. *Psychiatry Res* 2018;270:306-9.
118. St Clair D, Blackwood D, Muir W, et al. Association within a family of a balanced autosomal translocation with major mental illness. *Lancet* 1990;336:13-6.
119. Sachs NA, Sawa A, Holmes SE, et al. A frameshift mutation in Disrupted in Schizophrenia 1 in an American family with schizophrenia and schizoaffective disorder. *Mol Psychiatry* 2005;10:758-64.
120. Chubb JE, Bradshaw NJ, Soares DC, et al. The *DISC1* locus in psychiatric illness. *Mol Psychiatry* 2008;13:36-64.
121. Weng Y-T, Chien T, Kuan II, et al. The TRAX, *DISC1*, and *GSK3* complex in mental disorders and therapeutic interventions. *J Biomed Sci* 2018;25:71.
122. Bradshaw NJ, Porteous DJ. *DISC1*-binding proteins in neural development, signalling and schizophrenia. *Neuropharmacology* 2012;62:1230-41.
123. Murai K, Sun G, Ye P, et al. The TLX-miR-219 cascade regulates neural stem cell proliferation in neurodevelopment and schizophrenia iPSC model. *Nat Commun* 2016;7:10965.
124. Teng S, Thomson PA, McCarthy S, et al. Rare disruptive variants in the *DISC1* Interactome and Regulome: association with cognitive ability and schizophrenia. *Mol Psychiatry* 2018;23:1270-7.

125. Bakircioglu M, Carvalho OP, Khurshid M, et al. The essential role of centrosomal NDE1 in human cerebral cortex neurogenesis. *Am J Hum Genet* 2011;88:523-35.
126. Ye F, Kang E, Yu C, et al. DISC1 regulates neurogenesis via modulating kinetochore attachment of Ndel1/Nde1 during mitosis. *Neuron* 2017;96:1041-1054 e5.
127. Olabi B, Ellison-Wright I, McIntosh AM, et al. Are There progressive brain changes in schizophrenia? A meta-analysis of structural magnetic resonance imaging studies. *Biol Psychiatry* 2011;70:88-96.
128. Harrison PJ. Postmortem studies in schizophrenia. *Dialogues Clin Neurosci* 2000;2:349-57.
129. Bassett AS, Chow EW. Schizophrenia and 22q11.2 deletion syndrome. *Curr Psychiatry Rep* 2008;10:148-57.
130. Van L, Boot E, Bassett AS. Update on the 22q11.2 deletion syndrome and its relevance to schizophrenia. *Curr Opin Psychiatry* 2017;30:191-6.
131. Horowitz A, Shifman S, Rivlin N, et al. A survey of the 22q11 microdeletion in a large cohort of schizophrenia patients. *Schizophr Res* 2005;73:263-7.
132. Jolin EM, Weller RA, Weller EB. Occurrence of affective disorders compared to other psychiatric disorders in children and adolescents with 22q11.2 deletion syndrome. *J Affect Disord* 2012;136:222-8.
133. De Smedt B, Devriendt K, Fryns JP, et al. Intellectual abilities in a large sample of children with velo-cardio-facial syndrome: an update. *J Intellect Disabil Res* 2007;51:666-70.
134. Murphy KC, Jones RG, Griffiths D, et al. Chromosome 22qII deletions: an under-recognised cause of idiopathic learning disability. *Br J Psychiatry* 1998;172:180-3.
135. Toyoshima M, Akamatsu W, Okada Y, et al. Analysis of induced pluripotent stem cells carrying 22q11.2 deletion. *Transl Psychiatry* 2016;6:e934.
136. Zhao D, Lin M, Chen J, et al. MicroRNA profiling of neurons generated using induced pluripotent stem cells derived from patients with schizophrenia and schizoaffective disorder, and 22q11.2 del. *PLoS One* 2015;10:e0132387.
137. Warnica W, Merico D, Costain G, et al. Copy number variable microRNAs in schizophrenia and their neurodevelopmental gene targets. *Biol Psychiatry* 2015;77:158-66.
138. Lin M, Pedrosa E, Hrabovsky A, et al. Integrative transcriptome network analysis of iPSC-derived neurons from schizophrenia and schizoaffective disorder patients with 22q11.2 deletion. *BMC Syst Biol* 2016;10:105.
139. Chen HM, DeLong CJ, Bame M, et al. Transcripts involved in calcium signaling and telencephalic neuronal fate are altered in induced pluripotent stem cells from bipolar disorder patients. *Transl Psychiatry* 2014;4:e375.
140. Madison JM, Zhou F, Nigam A, et al. Characterization of bipolar disorder patient-specific induced pluripotent stem cells from a family reveals neurodevelopmental and mRNA expression abnormalities. *Mol Psychiatry* 2015;20:703-17.
141. Marchetto MC, Belinson H, Tian Y, et al. Altered proliferation and networks in neural cells derived from idiopathic autistic individuals. *Mol Psychiatry* 2017;22:820-35.
142. Mao Y, Ge X, Frank CL, et al. Disrupted in schizophrenia 1 regulates neuronal progenitor proliferation via modulation of GSK3 $\beta$ / $\beta$ -catenin signaling. *Cell* 2009;136:1017-31.
143. Reinhart V, Bove SE, Volfson D, et al. Evaluation of TrkB and BDNF transcripts in prefrontal cortex, hippocampus, and striatum from subjects with schizophrenia, bipolar disorder, and major depressive disorder. *Neurobiol Dis* 2015;77:220-7.
144. Hashimoto K. Brain-derived neurotrophic factor as a biomarker for mood disorders: an historical overview and future directions. *Psychiatry Clin Neurosci* 2010;64:341-57.
145. Hashimoto K. BDNF and proBDNF as biomarkers for bipolar disorder. *The British Journal of Psychiatry* 2015;205:410.
146. Hashimoto K, Shimizu E, Iyo M. Critical role of brain-derived neurotrophic factor in mood disorders. *Brain Res Brain Res Rev* 2004;45:104-14.
147. Post RM. Role of BDNF in bipolar and unipolar disorder: clinical and theoretical implications. *J Psychiatr Res* 2007;41:979-90.
148. Acheson A, Conover JC, Fandl JP, et al. A BDNF autocrine loop in adult sensory neurons prevents cell death. *Nature* 1995;374:450-3.
149. Huang EJ, Reichardt LF. Neurotrophins: roles in neuronal development and function. *Annu Rev Neurosci* 2001;24:677-736.
150. Ishima T, Illes S, Iwayama Y, et al. Abnormal gene expression of BDNF, but not BDNF-AS, in iPSC, neural stem cells and postmortem brain samples from bipolar disorder. *J Affect Disord* 2021;290:61-4.
151. Bavamian S, Mellios N, Lalonde J, et al. Dysregulation of miR-34a links neuronal development to genetic risk factors for bipolar disorder. *Mol Psychiatry* 2015;20:573-84.
152. Hewitt T, Alural B, Tilak M, et al. Bipolar disorder-iPSC derived neural progenitor cells exhibit dysregulation of store-operated Ca $^{2+}$  entry and accelerated differentiation. *Mol Psychiatry* 2023 July 4 [Epub ahead of print]. doi: 10.1038/s41380-023-02152-6.
153. Gao X, Zhang W, Yao L, et al. Association between structural and functional brain alterations in drug-free patients with schizophrenia: a multimodal meta-analysis. *J Psychiatry Neurosci* 2018;43:131-42.
154. Ramsay IS. An activation likelihood estimate meta-analysis of thalamocortical dysconnectivity in psychosis. *Biol Psychiatry Cogn Neurosci Neuroimaging* 2019;4:859-69.
155. Yao B, Negers SFW, Kahn RS, et al. Altered thalamocortical structural connectivity in persons with schizophrenia and healthy siblings. *Neuroimage Clin* 2020;28:102370.
156. Sheffield JM, Huang AS, Rogers BP, et al. Thalamocortical anatomical connectivity in schizophrenia and psychotic bipolar disorder. *Schizophr Bull* 2020;46:1062-71.
157. Avram M, Brandl F, Bauml J, et al. Cortico-thalamic hypo- and hyperconnectivity extend consistently to basal ganglia in schizophrenia. *Neuropsychopharmacology* 2018;43:2239-48.
158. Di Biase MA, Cetin-Karayumak S, Lyall AE, et al. White matter changes in psychosis risk relate to development and are not impacted by the transition to psychosis. *Mol Psychiatry* 2021;26:6833-44.
159. Bagautdinova IA. Assessment of environmental risks when acquiring new assets. *European Association of Geoscientists & Engineer* 2020;20:1-5.
160. Zuccoli GS, Nascimento JM, Moraes-Vieira PM, et al. Mitochondrial, cell cycle control and neuritogenesis alterations in an iPSC-based neurodevelopmental model for schizophrenia. *Eur Arch Psychiatry Clin Neurosci* 2023;273:1649-64.
161. Robicsek O, Karry R, Petit I, et al. Abnormal neuronal differentiation and mitochondrial dysfunction in hair follicle-derived induced pluripotent stem cells of schizophrenia patients. *Mol Psychiatry* 2013;18:1067-76.
162. Ni P, Noh H, Park GH, et al. iPSC-derived homogeneous populations of developing schizophrenia cortical interneurons have compromised mitochondrial function. *Mol Psychiatry* 2020;25:2873-88.
163. Shao Z, Noh H, Bin Kim W, et al. Dysregulated protocadherin-pathway activity as an intrinsic defect in induced pluripotent stem cell-derived cortical interneurons from subjects with schizophrenia. *Nat Neurosci* 2019;22:229-42.
164. Ishii T, Ishikawa M, Fujimori K, et al. *In vitro* modeling of the bipolar disorder and schizophrenia using patient-derived induced pluripotent stem cells with copy number variations of PCDH15 and RELN. *eNeuro* 2019;6:ENEURO.0403-18.2019.
165. Brennan K, Savas JN, Kim Y, et al. Phenotypic differences in hiPSC NPCs derived from patients with schizophrenia. *Mol Psychiatry* 2015;20:361-8.
166. Tessier-Lavigne M, Goodman CS. The molecular biology of axon guidance. *Science* 1996;274:1123-33.
167. Narla ST, Lee YW, Benson CA, et al. Common developmental genome deprogramming in schizophrenia – role of Integrative Nuclear FGFR1 Signaling (INFS). *Schizophr Res* 2017;185:17-32.
168. Uziel D, Muhlfriedel S, Zarbalis K, et al. Miswiring of limbic thalamocortical projections in the absence of ephrin-A5. *J Neurosci* 2002;22:9352-7.
169. Gao PP, Yue Y, Zhang JH, et al. Regulation of thalamic neurite outgrowth by the Eph ligand ephrin-A5: implications in the development of thalamocortical projections. *Proc Natl Acad Sci U S A* 1998;95:5329-34.
170. Tong M, Jun T, Nie Y, et al. The role of the Slit/Robo signaling pathway. *J Cancer* 2019;10:2694-705.
171. López-Bendito G, Flames N, Ma L, et al. Robo1 and Robo2 cooperate to control the guidance of major axonal tracts in the mammalian forebrain. *J Neurosci* 2007;27:3395-407.
172. Baumann N, Pham-Dinh D. Biology of oligodendrocyte and myelin in the mammalian central nervous system. *Physiol Rev* 2001;81:871-927.
173. de Vrij FM, Bouwkamp CG, Gunhanlar N, et al. Candidate CSPG4 mutations and induced pluripotent stem cell modeling implicate oligodendrocyte progenitor cell dysfunction in familial schizophrenia. *Mol Psychiatry* 2019;24:757-71.
174. McPhie DL, Nehme R, Ravichandran C, et al. Oligodendrocyte differentiation of induced pluripotent stem cells derived from subjects with schizophrenias implicate abnormalities in development. *Transl Psychiatry* 2018;8:230.

175. Malhotra D, Sebat J. CNVs: harbingers of a rare variant revolution in psychiatric genetics. *Cell* 2012;148:1223-41.
176. Pathania M, Davenport EC, Muir J, et al. The autism and schizophrenia associated gene *CYFIP1* is critical for the maintenance of dendritic complexity and the stabilization of mature spines. *Transl Psychiatry* 2014;4:e374.
177. Hsiao K, Harony-Nicolas H, Buxbaum JD, et al. *Cyfp1* regulates presynaptic activity during development. *J Neurosci* 2016;36:1564-76.
178. De Boulle K, Verkerk AJ, Reyniers E, et al. A point mutation in the *FMR-1* gene associated with fragile X mental retardation. *Nat Genet* 1993;3:31-5.
179. Christie SB, Akins MR, Schwob JE, et al. The FXG: a presynaptic fragile X granule expressed in a subset of developing brain circuits. *J Neurosci* 2009;29:1514-24.
180. Feng Y, Gutekunst CA, Eberhart DE, et al. Fragile X mental retardation protein: nucleocytoplasmic shuttling and association with somatodendritic ribosomes. *J Neurosci* 1997;17:1539-47.
181. Khandjian EW, Huot ME, Tremblay S, et al. Biochemical evidence for the association of fragile X mental retardation protein with brain polyribosomal ribonucleoproteins. *Proc Natl Acad Sci U S A* 2004;101:13357-62.
182. Stefani G, Fraser CE, Darnell JC, et al. Fragile X mental retardation protein is associated with translating polyribosomes in neuronal cells. *J Neurosci* 2004;24:7272-6.
183. Nebel RA, Zhao D, Pedrosa E, et al. Reduced *CYFIP1* in human neural progenitors results in dysregulation of schizophrenia and epilepsy gene networks. *PLoS One* 2016;11:e0148039.
184. Yoon KJ, Nguyen HN, Ursini G, et al. Modeling a genetic risk for schizophrenia in iPSCs and mice reveals neural stem cell deficits associated with adherens junctions and polarity. *Cell Stem Cell* 2014;15:79-91.
185. Sudhof TC. Synaptic neuroligin complexes: a molecular code for the logic of neural circuits. *Cell* 2017;171:745-69.
186. Gauthier J, Siddiqui TJ, Huashan P, et al. Truncating mutations in *NRXN2* and *NRXN1* in autism spectrum disorders and schizophrenia. *Hum Genet* 2011;130:563-73.
187. Zeng L, Zhang P, Shi L, et al. Functional impacts of *NRXN1* knock-down on neurodevelopment in stem cell models. *PLoS One* 2013;8:e59685.
188. Petanjek Z, Judaš M, Šimic G, et al. Extraordinary neurogenesis of synaptic spines in the human prefrontal cortex. *Proc Natl Acad Sci U S A* 2011;108:13281-6.
189. Paolicelli RC, Bolasco G, Pagani F, et al. Synaptic pruning by microglia is necessary for normal brain development. *Science* 2011;333:1456-8.
190. Sham PC, MacLean CJ, Kendler KS. A typological model of schizophrenia based on age at onset, sex and familial morbidity. *Acta Psychiatr Scand* 1994;89:135-41.
191. Sommer IE, Tiihonen J, van Mourik A, et al. The clinical course of schizophrenia in women and men—a nation-wide cohort study. *npj Schizophrenia* 2020;6:12.
192. Berdenis van Berlekom A, Muflihah CH, Snijders G, et al. Synapse pathology in schizophrenia: a meta-analysis of postsynaptic elements in postmortem brain studies. *Schizophr Bull* 2020;46:374-86.
193. Sellgren CM, Gracias J, Watmuff B, et al. Increased synapse elimination by microglia in schizophrenia patient-derived models of synaptic pruning. *Nat Neurosci* 2019;22:374-85.
194. Sukumaran SK, Paul P, Guttal V, et al. Abnormalities in the migration of neural precursor cells in familial bipolar disorder. *Dis Model Mech* 2022;15.
195. Osete JR, Akkouch IA, Ievglevskiy O, et al. Transcriptional and functional effects of lithium in bipolar disorder iPSC-derived cortical spheroids. *Mol Psychiatry* 2023;28:3033-43.
196. Konradi C, Heckers S. Molecular aspects of glutamate dysregulation: implications for schizophrenia and its treatment. *Pharmacol Ther* 2003;97:153-79.
197. Moghaddam B, Javitt D. From revolution to evolution: the glutamate hypothesis of schizophrenia and its implication for treatment. *Neuropsychopharmacology* 2012;37:4-15.
198. Voineskos A. The time is now to start evaluating biomarkers in the clinic. *World Psychiatry* 2023;22:267-8.
199. Homayoun H, Moghaddam B. NMDA receptor hypofunction produces opposite effects on prefrontal cortex interneurons and pyramidal neurons. *J Neurosci* 2007;27:11496-500.
200. Sigitova E, Fišar Z, Hroudová J, et al. Biological hypotheses and biomarkers of bipolar disorder. *Psychiatry Clin Neurosci* 2017;71:77-103.
201. Lan MJ, McLoughlin GA, Griffin JL, et al. Metabonomic analysis identifies molecular changes associated with the pathophysiology and drug treatment of bipolar disorder. *Mol Psychiatry* 2009;14:269-79.
202. Lener MS, Niciu MJ, Ballard ED, et al. Glutamate and GABA systems in the pathophysiology of major depression and antidepressant response to ketamine. *Biol Psychiatry* 2017;81:886-97.
203. Tiihonen J, Koskivi M, Lähteenvuo M, et al. Molecular signaling pathways underlying schizophrenia. *Schizophr Res* 2021;232:33-41.
204. Lee S, Kruglikov I, Huang ZJ, et al. A disinhibitory circuit mediates motor integration in the somatosensory cortex. *Nat Neurosci* 2013;16:1662-70.
205. Pi H-J, Hangya B, Kvitsiani D, et al. Cortical interneurons that specialize in disinhibitory control. *Nature* 2013;503:521-4.
206. Wen Z, Nguyen HN, Guo Z, et al. Synaptic dysregulation in a human iPSC cell model of mental disorders. *Nature* 2014;515:414-8.
207. Skene NG, Roy M, Grant SG. A genomic lifespan program that reorganises the young adult brain is targeted in schizophrenia. *eLife* 2017;6:10.7554/eLife.17915.
208. Kathuria A, Lopez-Lengowski K, Watmuff B, et al. Synaptic deficits in iPSC-derived cortical interneurons in schizophrenia are mediated by *NLGN2* and rescued by *N-acetylcysteine*. *Transl Psychiatry* 2019;9:321.
209. Kimoto S, Bazmi HH, Lewis DA. Lower expression of glutamic acid decarboxylase 67 in the prefrontal cortex in schizophrenia: contribution of altered regulation by *Zif268*. *Am J Psychiatry* 2014;171:969-78.
210. Tiihonen J, Koskivi M, Storvik M, et al. Sex-specific transcriptional and proteomic signatures in schizophrenia. *Nat Commun* 2019;10:3933.
211. Hook V, Brennand KJ, Kim Y, et al. Human iPSC neurons display activity-dependent neurotransmitter secretion: aberrant catecholamine levels in schizophrenia neurons. *Stem Cell Reports* 2014;3:531-8.
212. Howes OD, Kapur S. The dopamine hypothesis of schizophrenia: version III—the final common pathway. *Schizophr Bull* 2009;35:549-62.
213. Howes OD, McCutcheon R, Owen MJ, et al. The role of genes, stress, and dopamine in the development of schizophrenia. *Biol Psychiatry* 2017;81:9-20.
214. Howes OD, Nour MM. Dopamine and the aberrant salience hypothesis of schizophrenia. *World Psychiatry* 2016;15:3-4.
215. Thuné H, Recasens M, Uhlhaas PJ. The 40-Hz auditory steady-state response in patients with schizophrenia: a meta-analysis. *JAMA Psychiatry* 2016;73:1145-53.
216. Grent T, Gajwani R, Gross J, et al. 40-Hz auditory steady-state responses characterize circuit dysfunctions and predict clinical outcomes in clinical high-risk for psychosis participants: a magnetoencephalography study. *Biol Psychiatry* 2021;90:419-29.
217. Perrottelli A, Giordano GM, Brando F, et al. Unveiling the associations between EEG indices and cognitive deficits in schizophrenia-spectrum disorders: a systematic review. *Diagnostics (Basel)* 2022;12.
218. Chitty KM, Lagopoulos J, Hickie IB, et al. Hippocampal glutamatergic/NMDA receptor functioning in bipolar disorder: a study combining mismatch negativity and proton magnetic resonance spectroscopy. *Psychiatry Res* 2015;233:88-94.
219. Hashimoto K, Sawa A, Iyo M. Increased levels of glutamate in brains from patients with mood disorders. *Biol Psychiatry* 2007;62:1310-6.
220. Mishra HK, Ying NM, Luis A, et al. Circadian rhythms in bipolar disorder patient-derived neurons predict lithium response: preliminary studies. *Mol Psychiatry* 2021;26:3383-94.
221. Kim KH, Liu J, Sells Galvin RJ, et al. Transcriptomic analysis of induced pluripotent stem cells derived from patients with bipolar disorder from an old order Amish pedigree. *PLoS One* 2015;10:e0142693.
222. Mishra HK, Mandyam AD, Trenet W, et al. Neural progenitor cells derived from lithium responsive and non-responsive bipolar disorder patients exhibit distinct sensitivity to cell death following methamphetamine. *Neuropharmacology* 2023;226:109410.
223. Wagstyl K, Ronan L, Whitaker KJ, et al. Multiple markers of cortical morphology reveal evidence of supragranular thinning in schizophrenia. *Transl Psychiatry* 2016;6:e780.



224. Clifton NE, Collado-Torres L, Burke EE, et al. Developmental profile of psychiatric risk associated with voltage-gated cation channel activity. *Biol Psychiatry* 2021;90:399-408.
225. Nurnberger JL, Koller DL, Jung JJ, et al. Identification of pathways for bipolar disorder: a meta-analysis. *JAMA Psychiatry* 2014;71:657-64.
226. Page SC, Sripathy SR, Farinelli F, et al. Electrophysiological measures from human iPSC-derived neurons are associated with schizophrenia clinical status and predict individual cognitive performance. *Proc Natl Acad Sci U S A* 2022;119:e2109395119.
227. Mertens J, Wang QW, Kim Y, et al. Differential responses to lithium in hyperexcitable neurons from patients with bipolar disorder. *Nature* 2015;527:95-9.
228. Quiroz JA, Gray NA, Kato T, et al. Mitochondrially mediated plasticity in the pathophysiology and treatment of bipolar disorder. *Neuropsychopharmacology* 2008;33:2551-65.
229. Rollins BL, Morgan L, Hjelm BE, et al. Mitochondrial complex I deficiency in schizophrenia and bipolar disorder and medication influence. *Mol Neuropsychiatry* 2018;3:157-69.
230. Das SC, Hjelm BE, Rollins BL, et al. Mitochondria DNA copy number, mitochondria DNA total somatic deletions, Complex I activity, synapse number, and synaptic mitochondria number are altered in schizophrenia and bipolar disorder. *Transl Psychiatry* 2022;12:353.
231. Li J, Ryan SK, Deboer E, et al. Mitochondrial deficits in human iPSC-derived neurons from patients with 22q11.2 deletion syndrome and schizophrenia. *Transl Psychiatry* 2019;9:302.
232. Li J, Tran OT, Crowley TB, et al. Association of mitochondrial biogenesis with variable penetrance of schizophrenia. *JAMA Psychiatry* 2021;78:911-21.
233. Motahari Z, Moody SA, Maynard TM, et al. In the line-up: deleted genes associated with DiGeorge/22q11.2 deletion syndrome: are they all suspects? *J Neurodev Disord* 2019;11:7.
234. Kathuria A, Lopez-Lengowski K, McPhie D, et al. Disease-specific differences in gene expression, mitochondrial function and mitochondria-endoplasmic reticulum interactions in iPSC-derived cerebral organoids and cortical neurons in schizophrenia and bipolar disorder. *Discov Ment Health* 2023;3:8.
235. Paul P, Iyer S, Nadella RK, et al. Lithium response in bipolar disorder correlates with improved cell viability of patient derived cell lines. *Sci Rep* 2020;10:7428.
236. Muñoz-Estrada J, Benítez-King G, Berlanga C, et al. Altered subcellular distribution of the 75-kDa DISC1 isoform, cAMP accumulation, and decreased neuronal migration in schizophrenia and bipolar disorder: implications for neurodevelopment. *CNS Neurosci Ther* 2015;21:446-53.
237. Thomson PA, Malavasi EL, Grünwald E, et al. DISC1 genetics, biology and psychiatric illness. *Front Biol (Beijing)* 2013;8:1-31.
238. Heyes S, Pratt WS, Rees E, et al. Genetic disruption of voltage-gated calcium channels in psychiatric and neurological disorders. *Prog Neurobiol* 2015;134:36-54.
239. de Sousa TR, Dt C, Novais F. Exploring the hypothesis of a schizophrenia and bipolar disorder continuum: biological, genetic and pharmacologic data. *CNS Neurol Disord Drug Targets* 2023;22:161-71.
240. Seitz-Holland J, Nägele FL, Kubicki M, et al. Shared and distinct white matter abnormalities in adolescent-onset schizophrenia and adolescent-onset psychotic bipolar disorder. *Psychol Med* 2023;53:4707-19.
241. Sarrazin S, Cachia A, Hozer F, et al. Neurodevelopmental subtypes of bipolar disorder are related to cortical folding patterns: an international multicenter study. *Bipolar Disord* 2018;20:721-32.
242. McDonald C, Marshall N, Sham PC, et al. Regional brain morphometry in patients with schizophrenia or bipolar disorder and their unaffected relatives. *Am J Psychiatry* 2006;163:478-87.
243. McDonald C, Bullmore E, Sham P, et al. Regional volume deviations of brain structure in schizophrenia and psychotic bipolar disorder: computational morphometry study. *Br J Psychiatry* 2005;186:369-77.
244. Dubovsky SL, Lee C, Christiano J, et al. Elevated platelet intracellular calcium concentration in bipolar depression. *Biol Psychiatry* 1991;29:441-50.
245. Scesa G, Adami R, Bottai D. iPSC preparation and epigenetic memory: does the tissue origin matter? *Cells* 2021;10.
246. Kajiwara M, Aoi T, Okita K, et al. Donor-dependent variations in hepatic differentiation from human-induced pluripotent stem cells. *Proc Natl Acad Sci U S A* 2012;109:12538-43.
247. Kuroda Y, Kitada M, Wakao S, et al. Unique multipotent cells in adult human mesenchymal cell populations. *Proc Natl Acad Sci U S A* 2010;107:8639-43.
248. Dezawa M. Muse cells provide the pluripotency of mesenchymal stem cells: direct contribution of muse cells to tissue regeneration. *Cell Transplant* 2016;25:849-61.
249. Amin M, Kushida Y, Wakao S, et al. Cardiogenic growth factor-driven induction of human muse cells into cardiomyocyte-like phenotype. *Cell Transplant* 2018;27:285-98.
250. Niizuma K, Borlongan CV, Tominaga T. Application of muse cell therapy to stroke. *Adv Exp Med Biol* 2018;1103:167-86.
251. Uchida H, Niizuma K, Kushida Y, et al. Human muse cells reconstruct neuronal circuitry in subacute lacunar stroke model. *Stroke* 2017;48:428-35.
252. Ling L, Zhang S, Ji Z, et al. Therapeutic effects of lipo-prostaglandin E1 on angiogenesis and neurogenesis after ischemic stroke in rats. *Int J Neurosci* 2016;126:469-77.
253. Shoubridge C, Harvey RJ, Dudding-Byth T. *IQSEC2* mutation update and review of the female-specific phenotype spectrum including intellectual disability and epilepsy. *Hum Mutat* 2019;40:5-24.
254. Al Sammarraie SHA, Aprile D, Meloni I, et al. An example of neuro-glial commitment and differentiation of muse stem cells obtained from patients with *IQSEC2*-related neural disorder: a possible new cell-based disease model. *Cells* 2023;12.
255. Borsboom D, Haslbeck JMB, Robinaugh DJ. Systems-based approaches to mental disorders are the only game in town. *World Psychiatry* 2022;21:420-2.
256. Berk M. Biomarkers in psychiatric disorders: status quo, impediments and facilitators. *World Psychiatry* 2023;22:174-6.
257. Yatham LN. Biomarkers for clinical use in psychiatry: where are we and will we ever get there? *World Psychiatry* 2023;22:263-4.
258. Starzer M, Hansen HG, Hjorthøj C, et al. 20-year trajectories of positive and negative symptoms after the first psychotic episode in patients with schizophrenia spectrum disorder: results from the OPUS study. *World Psychiatry* 2023;22:424-32.
259. Mucci A, Merlotti E, Uçok A, et al. Primary and persistent negative symptoms: Concepts, assessments and neurobiological bases. *Schizophr Res* 2017;186:19-28.
260. Galderisi S, Mucci A, Dollfus S, et al. EPA guidance on assessment of negative symptoms in schizophrenia. *Eur Psychiatry* 2021;64:e23.
261. Rathod B, Kaur A, Basavanagowda DM, et al. Neurological soft signs and brain abnormalities in schizophrenia: a literature review. *Cureus* 2020;12:e11050.
262. Aedo A, Murru A, Sanchez R, et al. Clinical characterization of rapid cycling bipolar disorder: association with attention deficit hyperactivity disorder. *J Affect Disord* 2018;240:187-92.