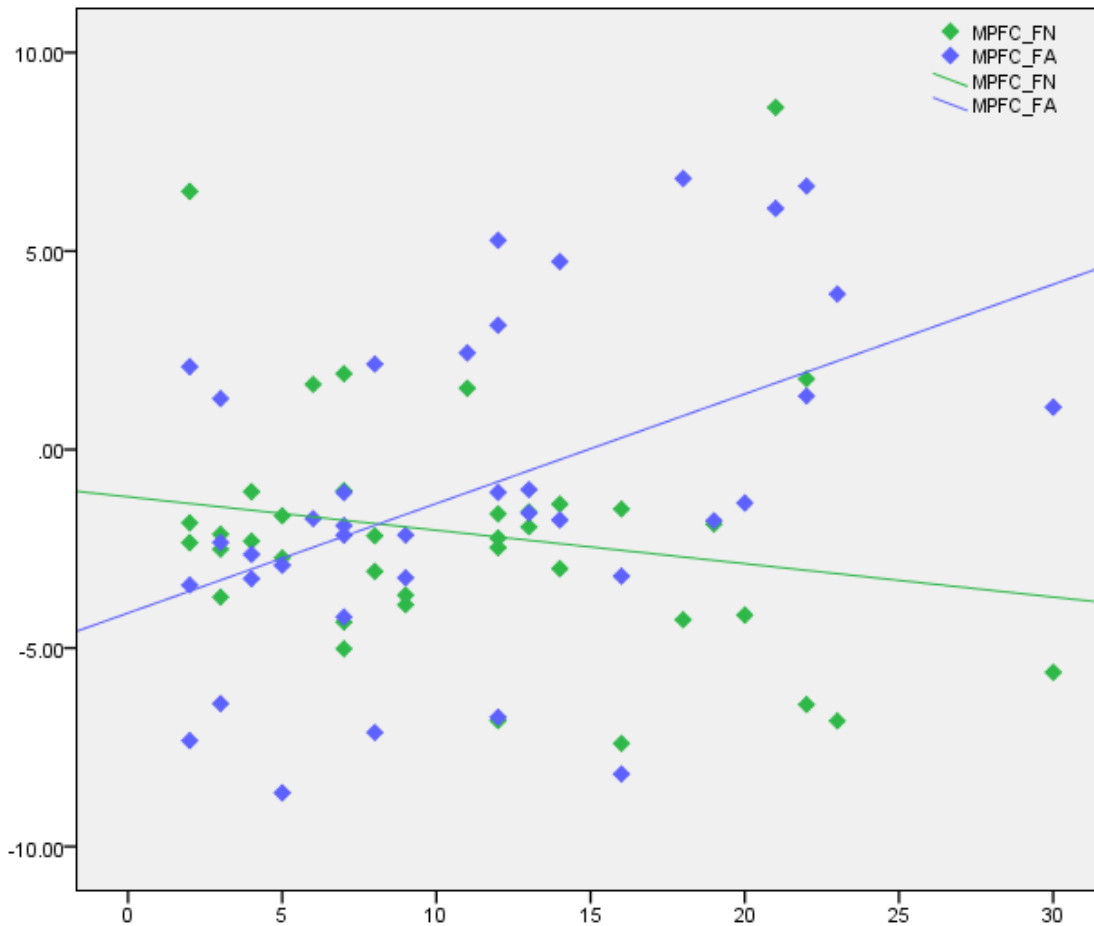


Appendix 1 to Stuke H; Gutwinski S, Wiers CE, et al. To drink or not to drink: Harmful drinking is associated with hyperactivation of reward areas rather than hypoactivation of control areas in men. *J Psychiatry Neurosci* 2016.

DOI: 10.1503/jpn.150203

Copyright © 2016 The Author(s) or their employer(s). To receive this resource in an accessible format, please contact us at cmajgroup@cmaj.ca.

Online appendices are unedited and posted as supplied by the authors.

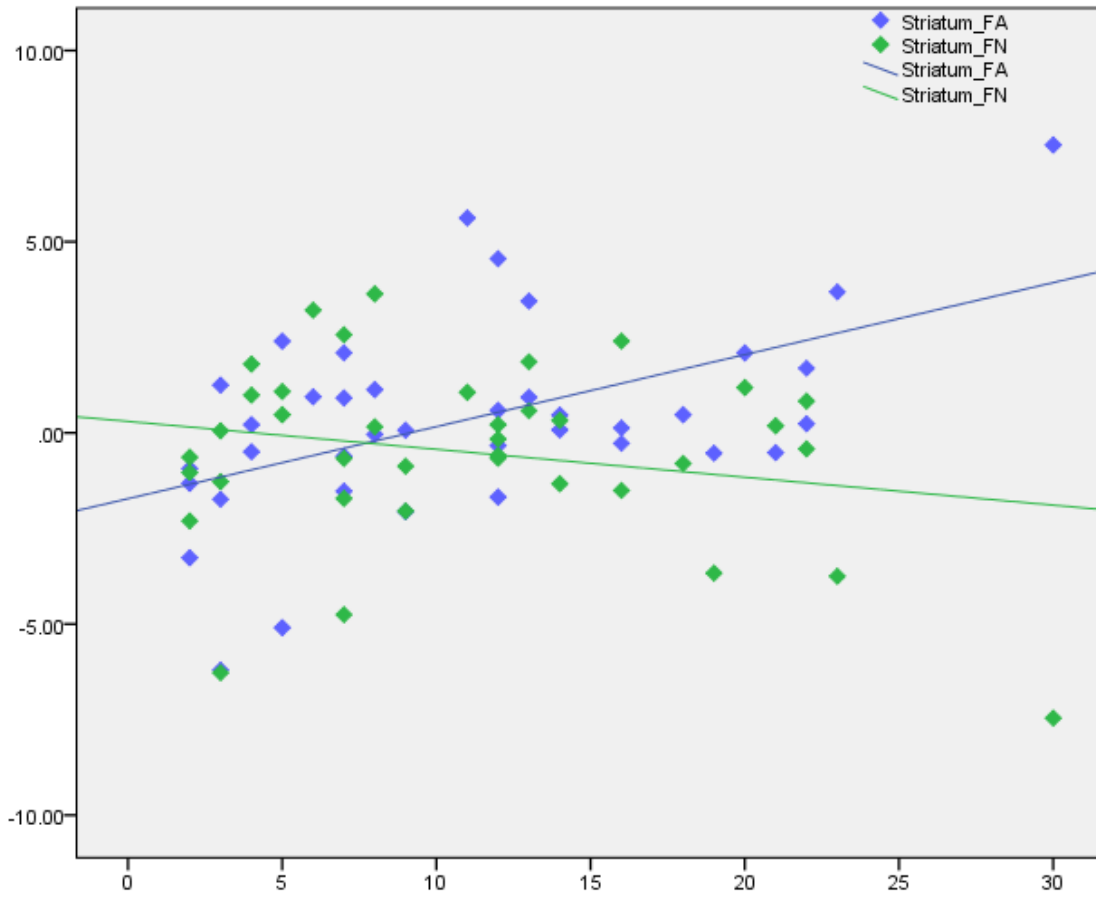


Supplementary Figure 1: Betas (y-axis) for decisions in favor of the desired alcoholic and non-alcoholic drinks (blue and green, respectively) at the peak voxel of the left MPFC (MNI coordinates 0, 60, 18) plotted against AUDIT scores (x-axis)

Appendix 1 to Stuke H; Gutwinski S, Wiers CE, et al. To drink or not to drink: Harmful drinking is associated with hyperactivation of reward areas rather than hypoactivation of control areas in men. *J Psychiatry Neurosci* 2016.

DOI: 10.1503/jpn.150203

Online appendices are unedited and posted as supplied by the authors.

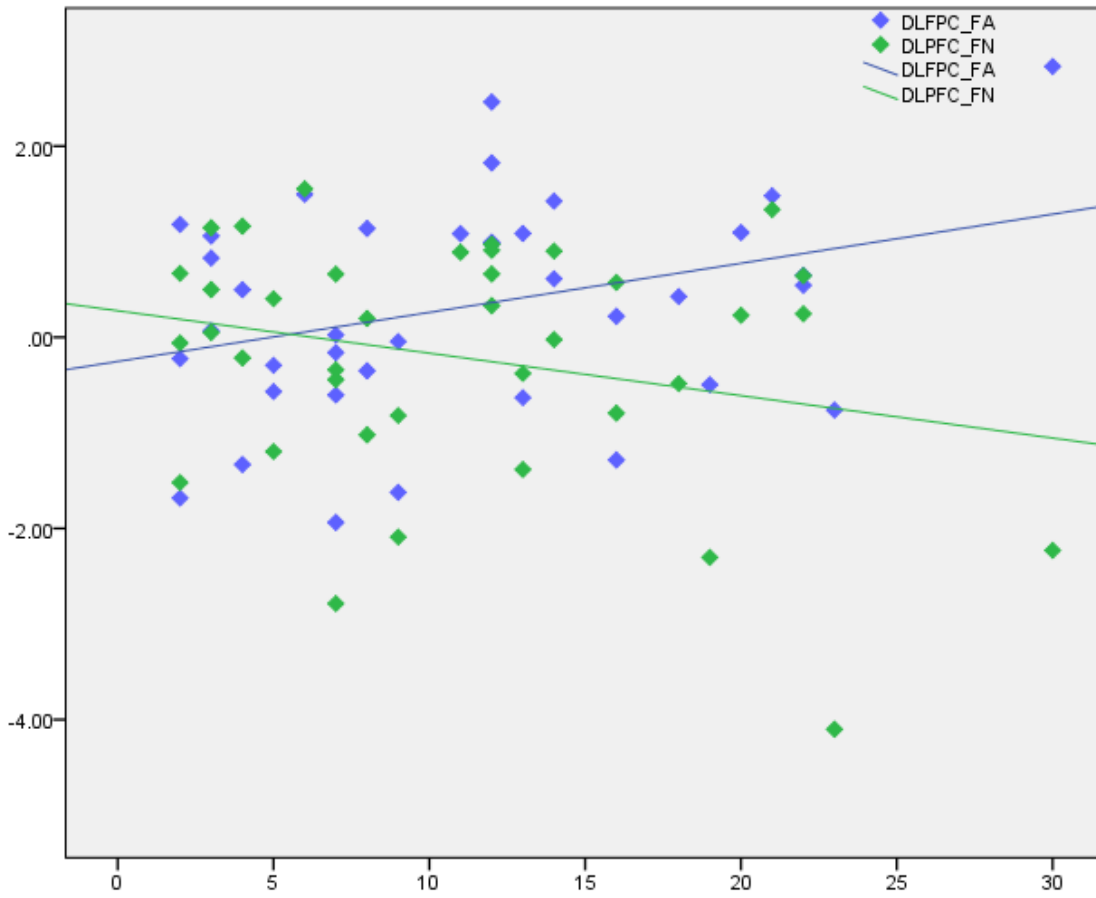


Supplementary Figure 2: Betas (y-axis) for decisions in favor of the more desired alcoholic and non-alcoholic drinks (blue and green, respectively) at the peak voxel of the left striatum (MNI coordinates -4, 7, 4) plotted against AUDIT scores (x-axis)

Appendix 1 to Stuke H; Gutwinski S, Wiers CE, et al. To drink or not to drink: Harmful drinking is associated with hyperactivation of reward areas rather than hypoactivation of control areas in men. *J Psychiatry Neurosci* 2016.

DOI: 10.1503/jpn.150203

Online appendices are unedited and posted as supplied by the authors.



Supplementary Figure 3: Betas (y-axis) for decisions in favor of the more desired alcoholic and non-alcoholic drinks (blue and green, respectively) at the peak voxel of the left DLPFC (MNI coordinates -18, 18, 60) plotted against AUDIT scores (x-axis)