

DOI: 10.1503/jpn.120029

Copyright © 2012 The Author(s) or their employer(s). To receive this resource in an accessible format, please contact us at cmajgroup@cmaj.ca.

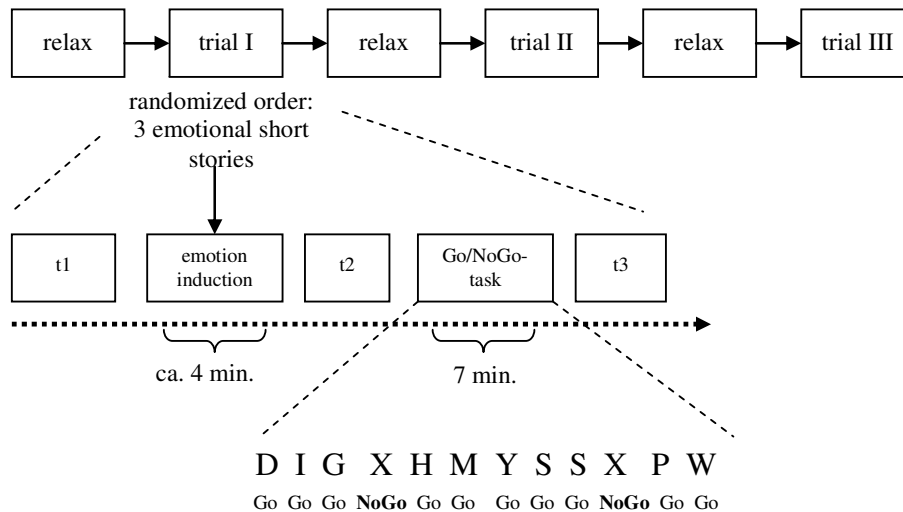


Fig. S1: Experimental procedure. t1, t2, t3: emotion ratings.

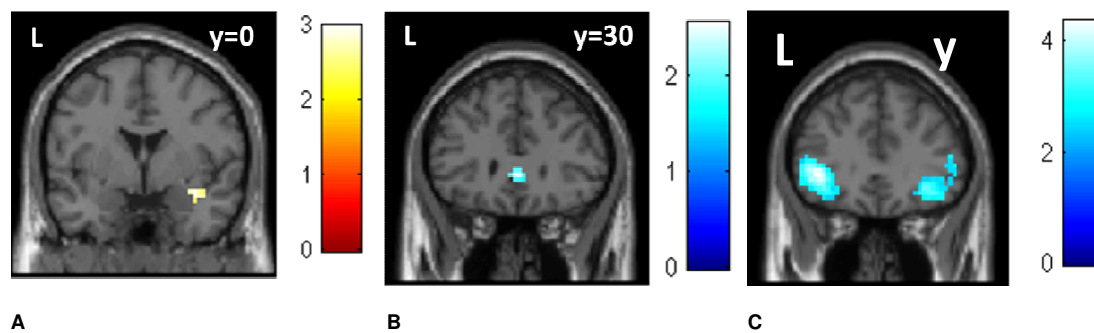


Fig. S2: Group differences during and after anger induction versus joy mood induction. **(A)** Trend for stronger activation of the right amygdala ($p_{FWE} = 0.07$; the left amygdala showed a weak trend: SVC $p_{FWE} = 0.15$) in 17 patients with borderline personality disorder (BPD) compared to 18 healthy controls when participants listened to an anger-inducing story compared to a joy/neutral story. Colour bars indicate t values. **(B)** Trend for stronger activation of the subgenual anterior cingulate (SVC $p_{FWE} = 0.11$) in 18 healthy controls compared to 17 patients with BPD when participants listened to an anger-inducing story compared to a joy/neutral story. **(C)** Reduced left inferior frontal cortex activation (SVC $p_{FWE} = 0.003$) in 17 patients with BPD compared to 18 healthy controls during go/no-go blocks after an anger condition compared to a joy condition. FWE = family-wise error; SVC = small volume correction.

Appendix 1 to Jacob GA, Zvonik K, Kamphausen S, et al. Emotional modulation of motor response inhibition in women with borderline personality disorder: an fMRI study. *J Psychiatry Neurosci* 2012.

DOI: 10.1503/jpn.120029

Table S1: Brain activation during the go/no-go task, independent of emotional context, in 17 patients with borderline personality disorder and 18 healthy controls

Region	MNI coordinate			z value	Voxel-level <i>p</i> value, uncorrected	Voxel-level <i>p</i> value, FWE-corrected	Cluster size in voxels
	<i>x</i>	<i>y</i>	<i>z</i>				
Controls							
Middle frontal/inferior frontal cortex	45	39	24	5.79	< 0.001	< 0.001	1709
Parietal cortex	45	-39	45	5.55	< 0.001	< 0.001	844
Insula	-36	18	3	5.36	< 0.001	0.001	304
BPD							
Middle frontal/inferior frontal cortex	33	54	21	4.51	< 0.001	0.035	130
Parietal cortex	60	-42	24	5.54	< 0.001	< 0.001	826
Insula	36	21	-3	4.71	< 0.001	0.015	290

BPD = borderline personality disorder; FWE = family-wise error.