

Appendix 1 to Ramasubbu R, Anderson S, Haffenden A, et al. Double-blind optimization of subcallosal cingulate deep brain stimulation for treatment-resistant depression: a pilot study. *J Psychiatry Neurosci* 2013.

DOI: 10.1503/jpn.120160

Copyright © 2013 The Author(s) or their employer(s). To receive this resource in an accessible format, please contact us at cmajgroup@cmaj.ca.

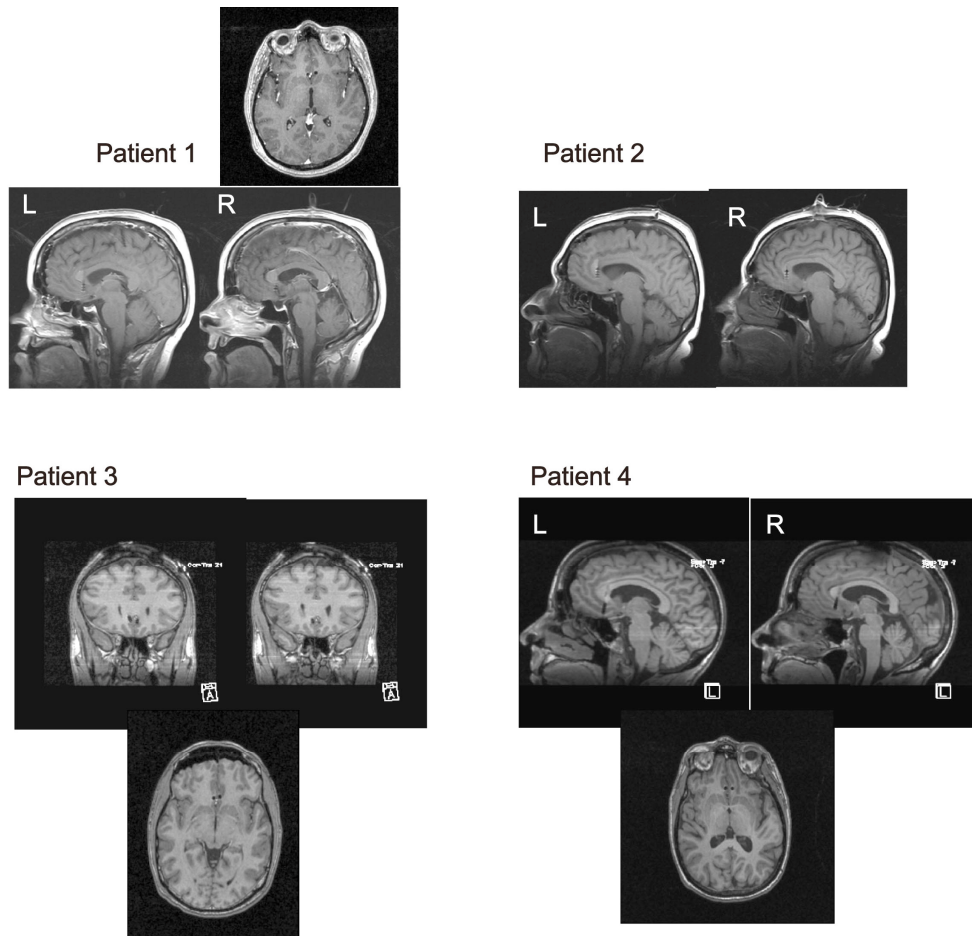


Fig. S1: T_1 -weighted magnetic resonance image showing deep brain stimulation (DBS) placement in all patients. For patient 1, sagittal views of the left (L) and right (R) DBS lead and a representative axial image are shown. For patient 2, only sagittal images were of sufficient quality because of movement artifact. In patient 3, coronal images of the DBS lead and a representative axial image is shown. For patient 4, sagittal and a representative axial image are provided.